

BUILDINGS DESIGN CAPABILITIES

Healthcare

Education

Hospitality

Mosque

Mixed-Use

Recreational

Commercial

Residential

Retail

Banks

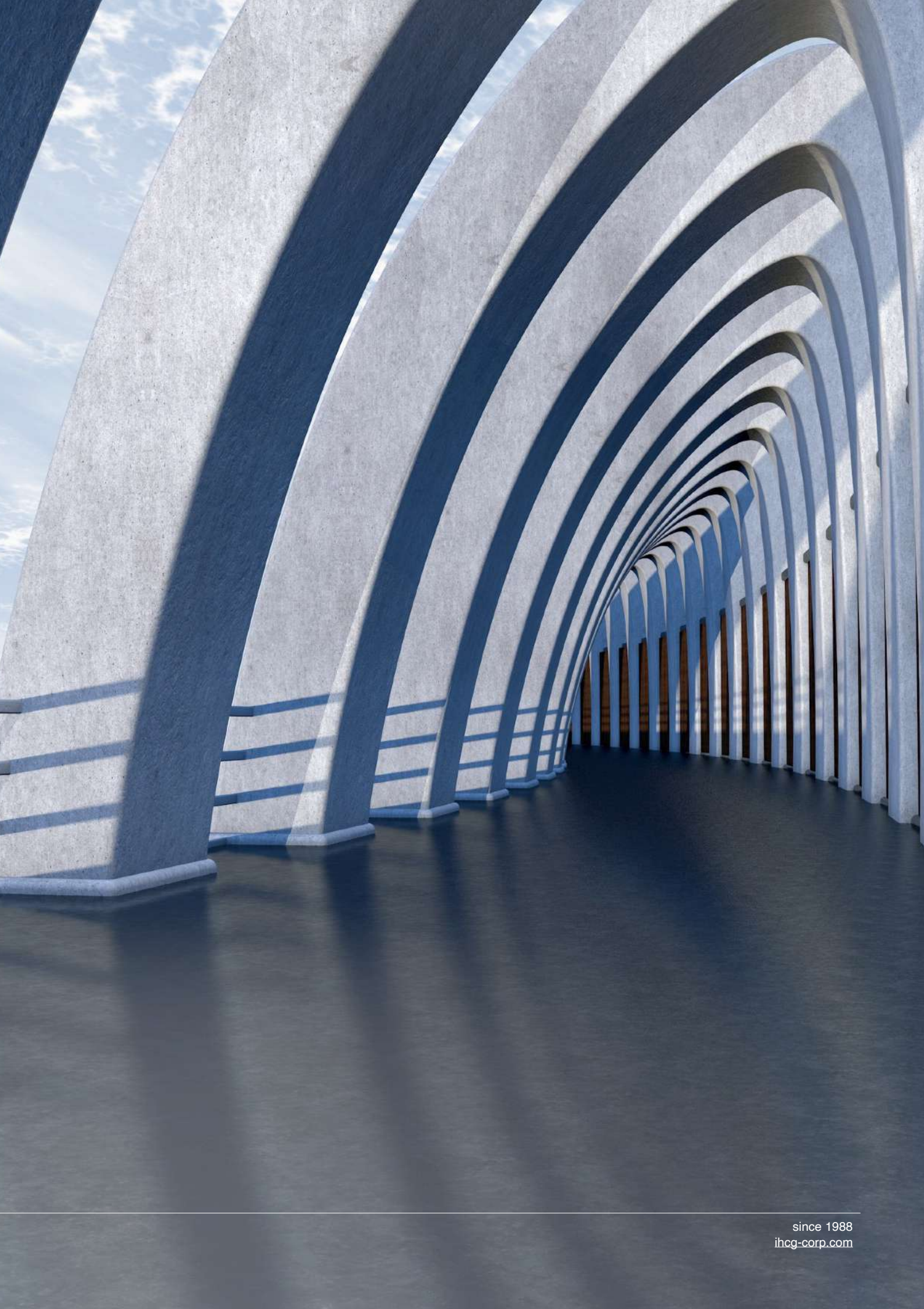
IHCG is an independent firm of designers, planners, engineers, consultants and technical specialists offering a broad range of professional engineering services. Through our work, we aim to make a positive difference to different communities.

**We shape a
better world.**

Founded in 1988 with an initial focus on HVAC engineering, IHCG first came to the world's attention with the redesign of the Hot Water System at Sheraton El Gizera, 27 floors (Now Sofitel El Gizera) on 1992. IHCG has since grown into a multi-disciplinary organisation. Its work, such as the Kempinski Royal Maxim Hotel on 2011 located in Cairo.

We develop and influence our design based on foresight, sharing ideas, and listening, to help reach significant new ideas to life and engage clients and stakeholders in meaningful conversations about change.







I H C G

Introduction

In the early 90th, IHCG has accomplished astounding feats. Through our fortitude and innovative spirit, and provided unparalleled value to clients in Egypt and the region. We take pride in our commitment to shape a better world. Each year, IHCG sets strategic plan and wide range of developments to ensure the continued success of this mission.

We interviewed internal subject matter experts and external stakeholders involved at every stage of the design process to identify the biggest trends in the design and to develop an understanding of how these trends will impact IHCG's daily practice.

In the following pages, you will find a distillation of the insights that emerged from this development. These findings around the future of design indicate areas of particular interest to IHCG, as well as highlighting some of the most exciting new ideas from our investigation. We hope that this report will serve as a starting point for deep, regionally-specific conversations on how to best leverage trends relevant to the future of design in order to improve our work, deliver more value for our clients, and remain a leading provider of cutting-edge solutions.

MISSION

We integrate most of engineering and architecture disciplines at one place to deliver exceptional design ideas and solutions with competitive prices, and to help make any project pass with ease, for our Clients in the public and private sectors. The science of engineering and sustainable design, together with construction management and supervision services gives our Clients better future for their projects.

CONTENTS

- Al Amaan City Centre, Khartoum, Sudan
- The Egyptian German hospital (EGH), Giza, Egypt
- Kempinski Royal Maxim Hotel, 5 Stars , New Cairo, Egypt
- Al Qods Building, Alger, Algeria
- Nile Grand Plaza, Khartoum, Sudan
- Um Dorman Hospital, Um Dorman, Sudan
- Sudan Cotton Office Building, Khartoum, Sudan
- Wahat Al Khartoum, Khartoum, Sudan
- Medical Tower, Khartoum, Sudan
- Wahran Complex, Wahran, Algeria
- Al Farouk Omar Mosque, Gunzoor East, Tripoli, Libya
- National Gene Bank, Giza, Egypt
- Niyala Hotel, 4 Stars, 120 Room, Niyala, Sudan
- Anda Complex, Khartoum, Sudan
- Khartoum World Trade Centre (KWTC), Khartoum, Sudan
- El Wakeel Tower Mixed-Use, Khartoum, Sudan
- Diesel Tower Residential Apartments, Khartoum, Sudan
- Police Tower Residential Apartments, Khartoum, Sudan

AL AMAAN CITY CENTRE

Khartoum, Sudan



Client

Social Security
Investment
Authority (SSIA)

Services

Architectural
Structural
MEP
Interior Design

Stages

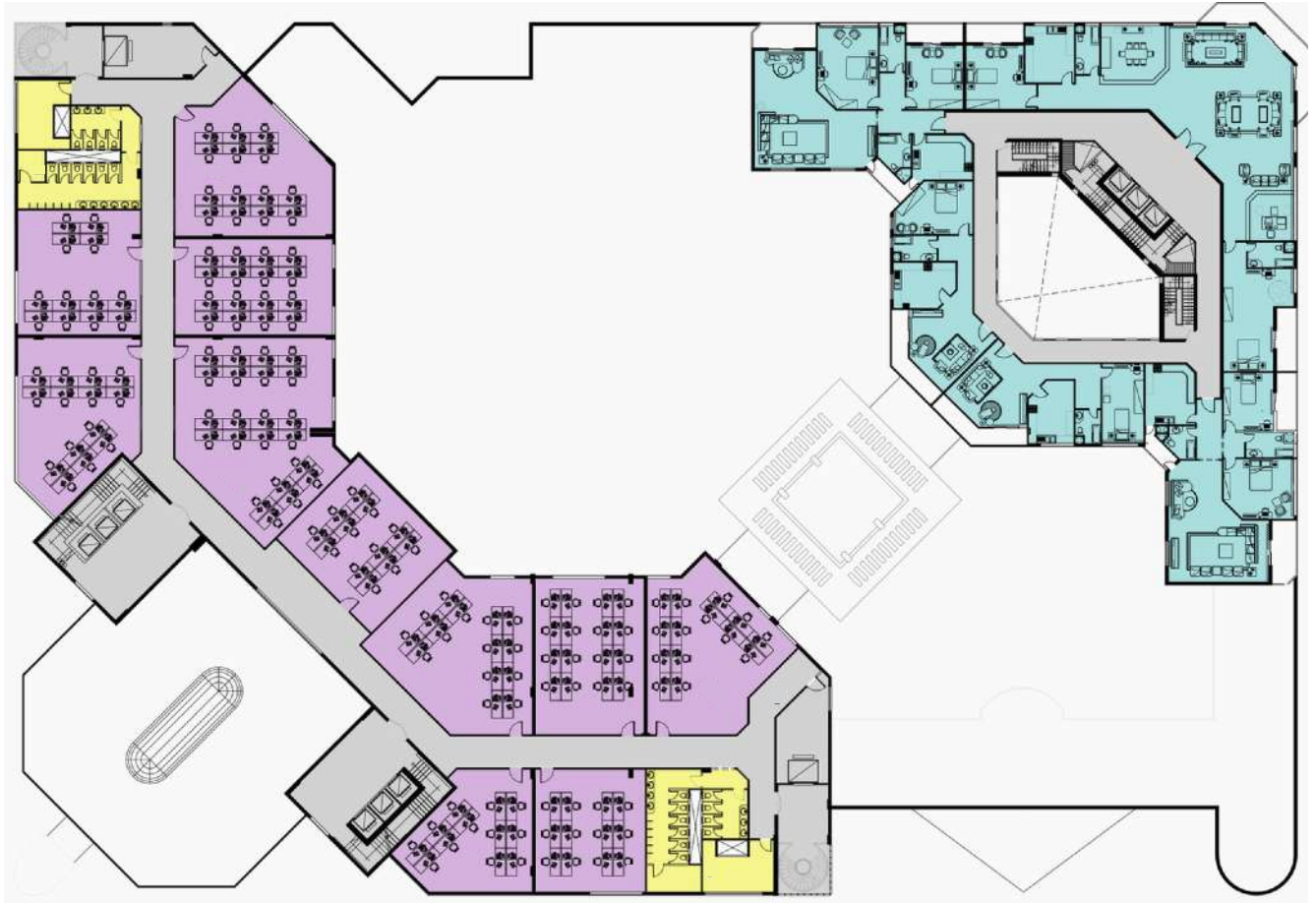
Studies and
Programming
Conceptual Design
Preliminary Design
Detailed Design
Tender Documents

Planning & Studying

Al Amaan City Centre is a high rise building of 40 floors, located in the heart of Khartoum, the capital of Sudan. Has a plot area of 8,875 sq.m, and foot print of 6,175 sq.m, and built-up are of 162,470 sq.m.

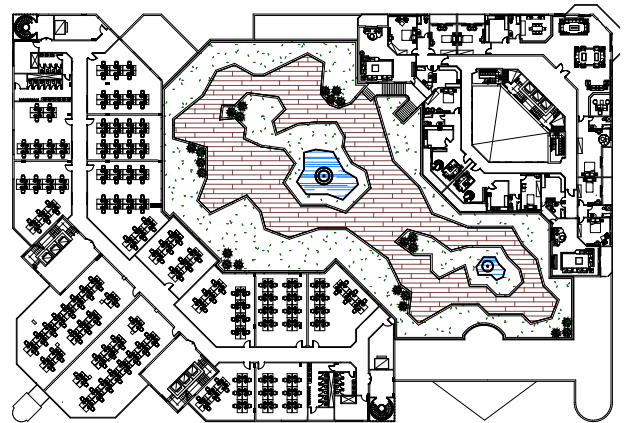
The mixed-use centre has spaces for retail and cinema, office building, and hotel apartments.



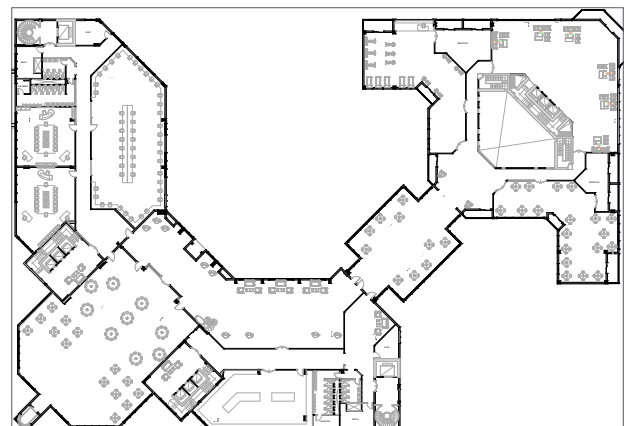


Typical Floor

- Office Tower
- Circulation
- Residential Tower
- Services



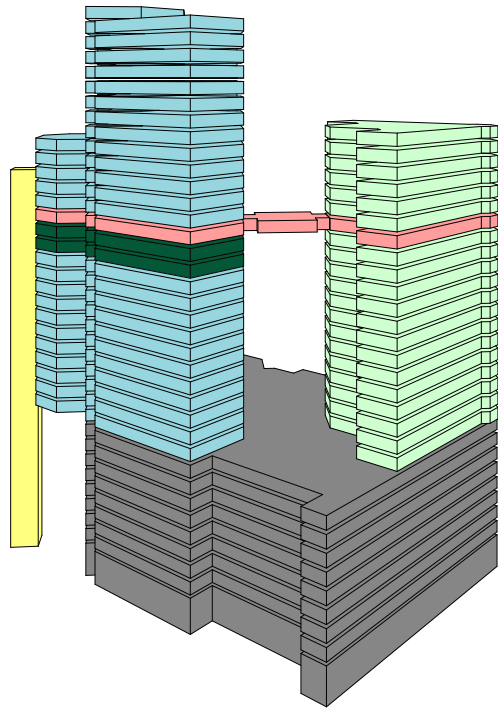
Podium Roof Top



Business Center

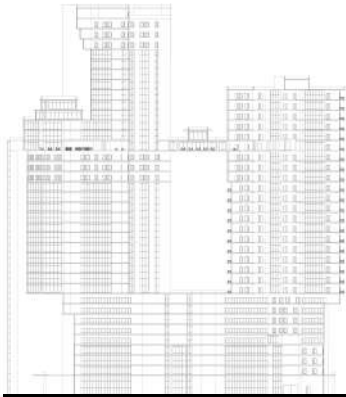
AL AMAAN CITY CENTRE

Khartoum, Sudan

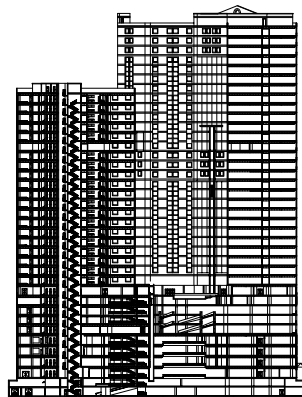


Architectural Mass Model

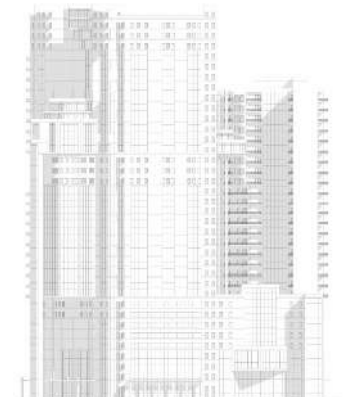
- Offices
- Business Center
- Conference Halls
- Apartments
- Retail
- Skylight Elevator



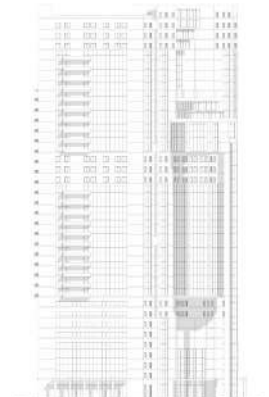
Section C-C



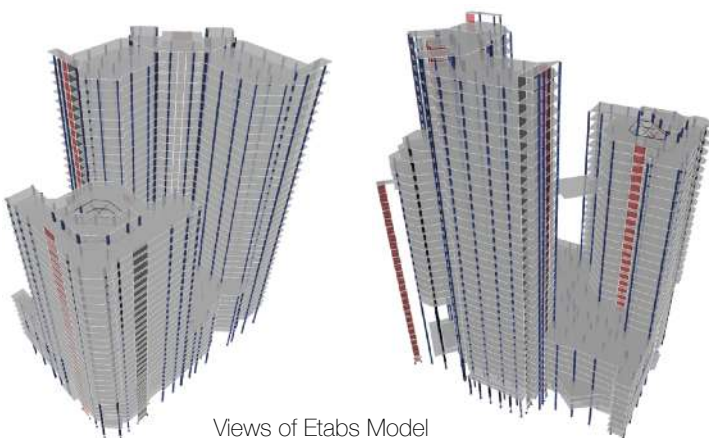
Section B-B



Main Elevation



Side Elevation



Views of Etabs Model

Structural Design

IHCG engineers usually conduct a comparison between various structural systems in coordination with our architectural team to assess differences in building performance to reach the optimum economical structural solution, in conjunction with building function and space requirements.

A 40 floor Steel Structure Design



THE EGYPTIAN GERMAN HOSPITAL (EGH)

Giza, Egypt



Client

Al-Hammd Company for
Medical & Environmental
Services

Services

Geotechnical Investigation
Topographic Surveys
Medical Planning
Medical Equipment Planning
Architectural
Interior Design
Structural
MEP
Construction Supervision



Stages

Planning and Studies
Conceptual Design
Schematic Design
Design Development
Detailed Design
Tender Documents
Tender Action

The Egyptian German Hospital accommodate 120 Bed is a General Hospital located in Abo Rawash City, Gize, Egypt near the Smart Village, in a plot area of 7,300 sq.m, and foot print of 3,650 sq.m, and built-up area of 22,000 sq.m, in 5 floors.

The Client intends to develop a landmark and 5-stars hospital in the area.

Second Floor

- 1 Inpatient Ward
- 2 ICU
- 3 Surgical Department
- 4 Waiting Area

First Floor

- 1 Inpatient Ward
- 4 Waiting Area
- 5 Cathlab
- 6 Administration
- 7 Endoscope

Ground Floor

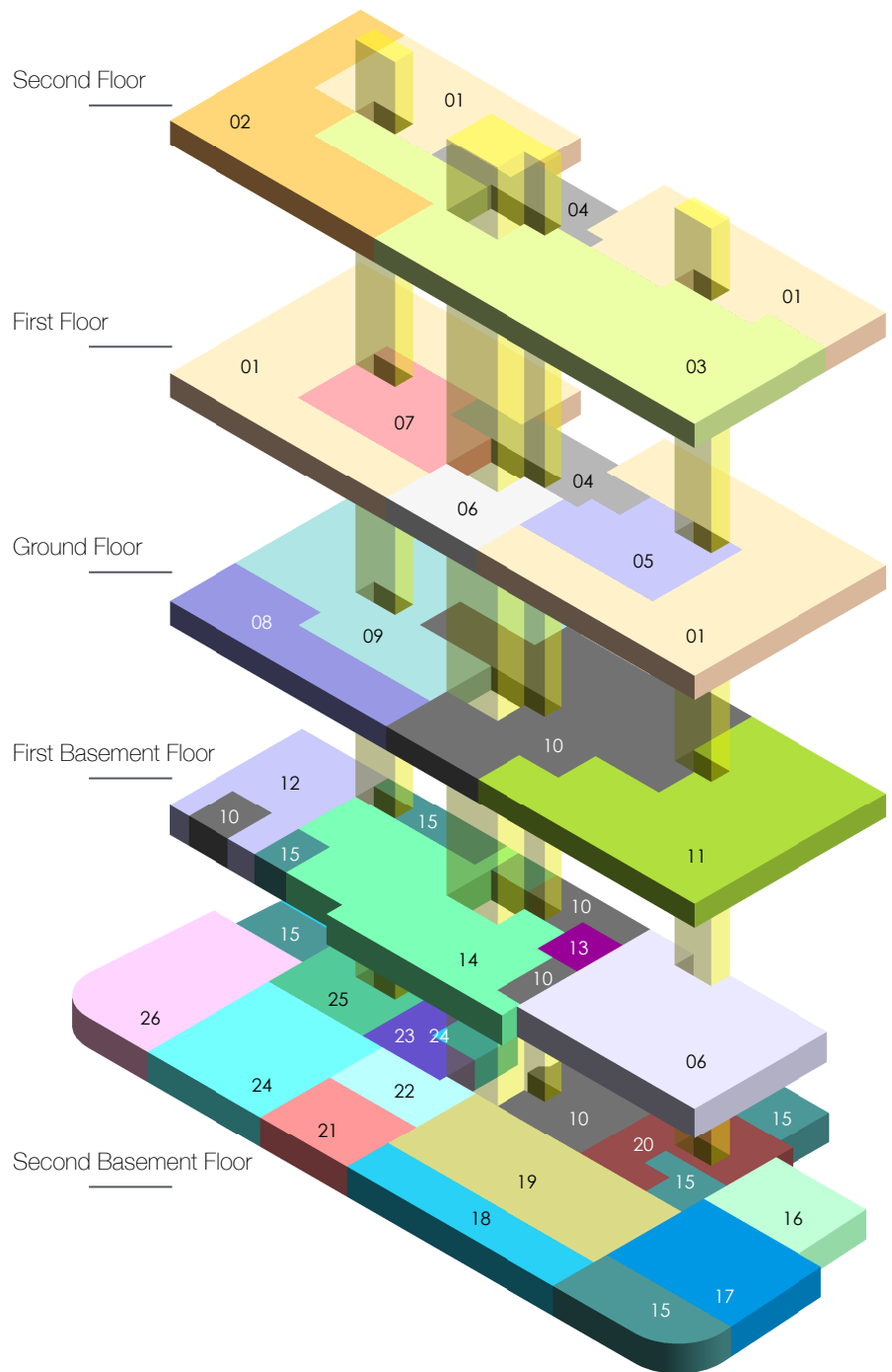
- 8 Physical Therapy
- 9 Dialysis
- 10 Reception
- 11 Outpatient Department

First Basement Floor

- 6 Administration
- 10 Reception
- 12 Radiology
- 13 Cafeteria
- 14 Emergency
- 15 MEP

Second Basement Floor

- 10 Reception
- 15 MEP
- 16 Waste
- 17 Laundry
- 18 Storage
- 19 CSSD
- 20 Morgue
- 21 Medical Records
- 22 Services
- 23 Workshop
- 24 Kitchen
- 25 Dining Hall
- 26 Pharmacy

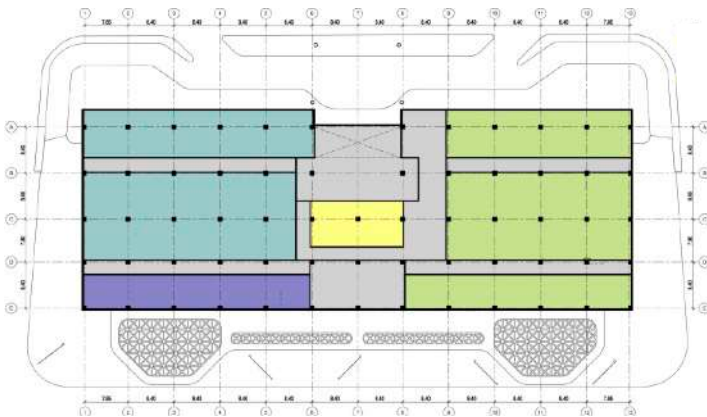


**Architectural
Mass Model**

THE EGYPTIAN GERMAN HOSPITAL

Cont.

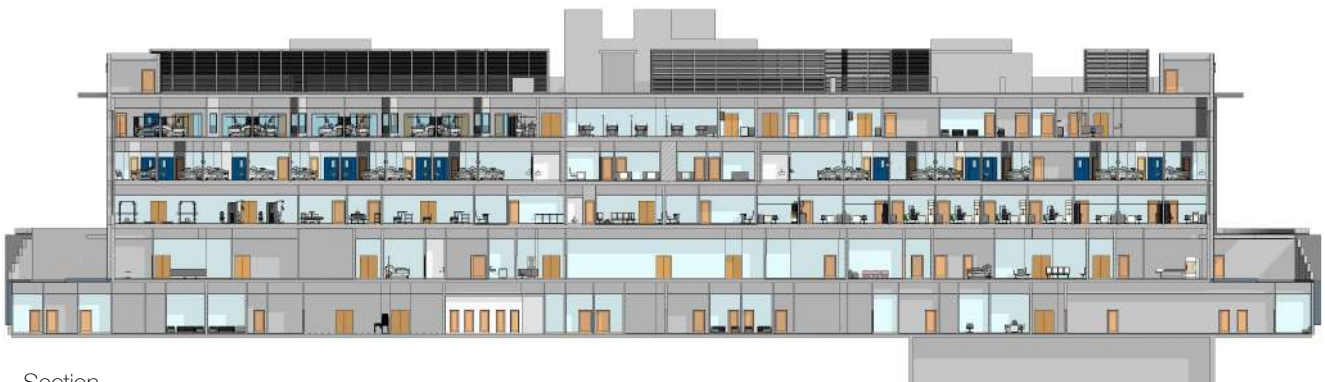
Giza, Egypt



Ground Floor

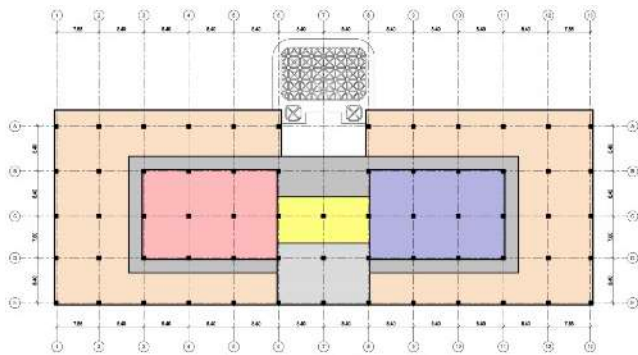
- Reception
- Main Core
- Physical Therapy
- Dialysis
- Outpatient Department

Physical
Planning
Medical and
Equipment
Planning



Section

First Floor



- Inpatient Ward
- Cathlab
- Main Core
- Endoscopy
- Waiting Area
- Administration

HEALTH FACILITIES

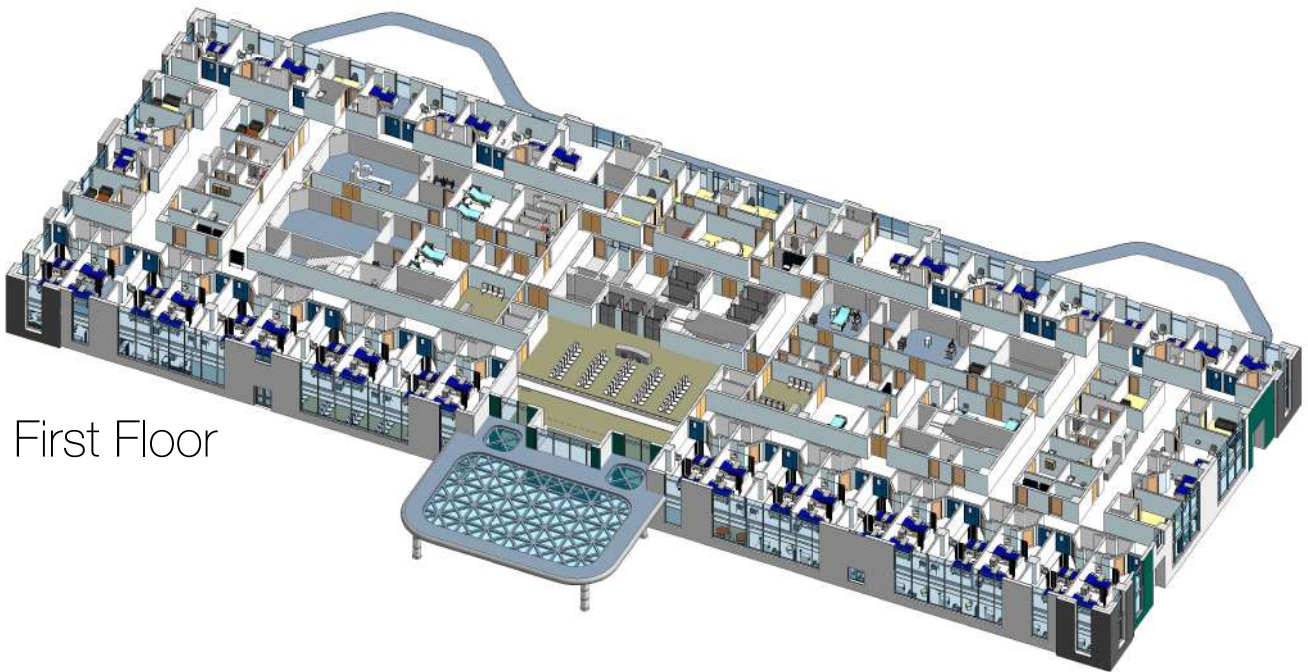
IHCG provide full engineering design consultancy services for healthcare facilities...



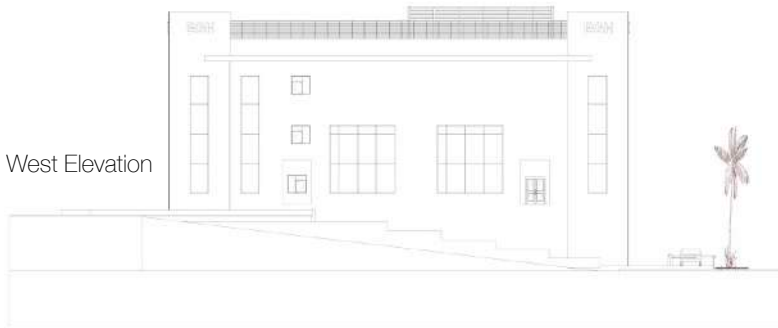
THE EGYPTIAN GERMAN HOSPITAL

Giza, Egypt

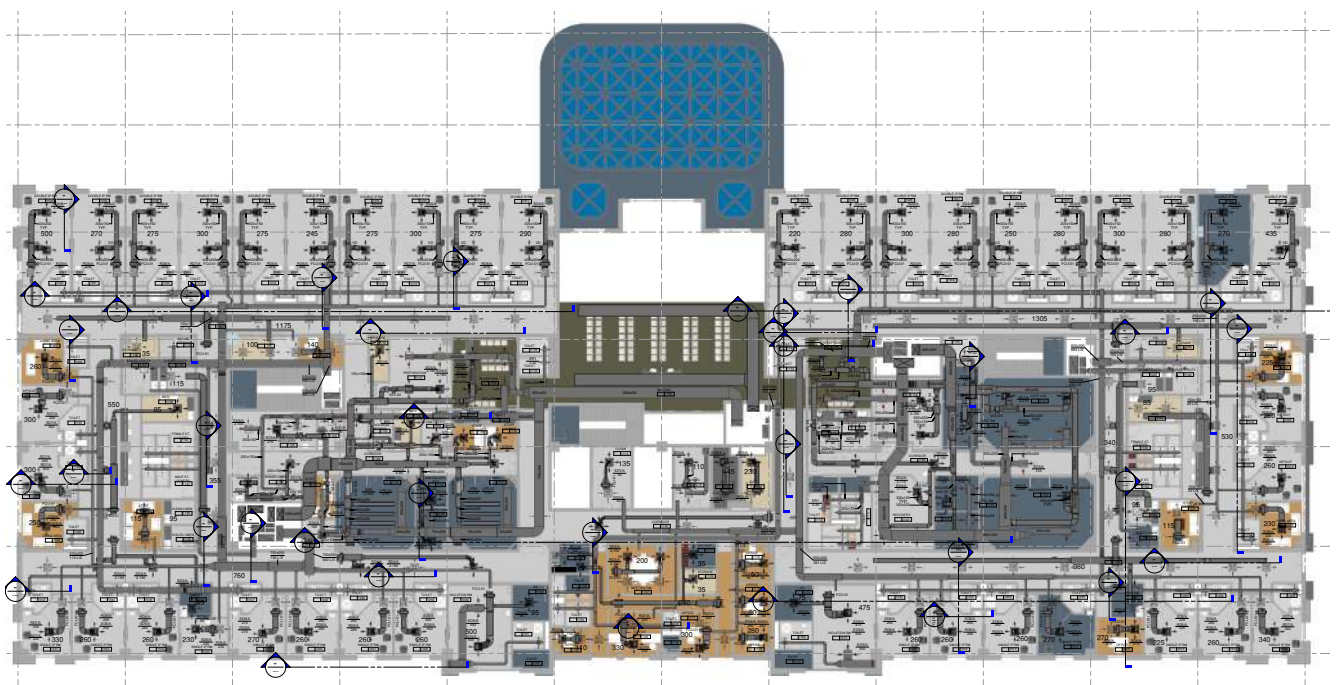
Cont.



First Floor



West Elevation

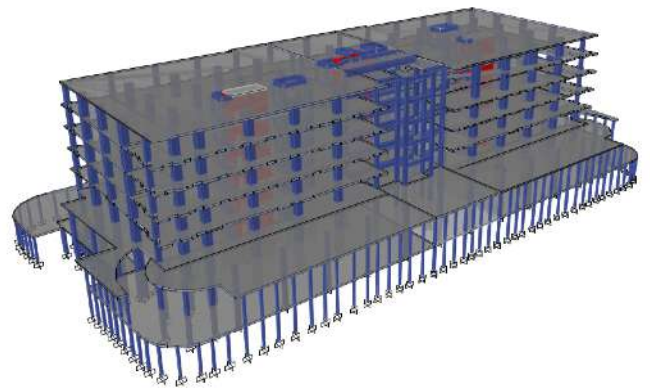


First Floor HVAC Plan

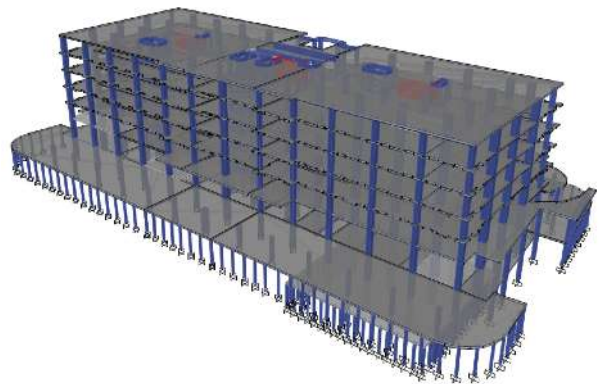


Structural Engineering


We stretch the design boundaries daily, but always with a practical guide. Our highly experienced in-house team of structural engineers regularly communicates and coordinates with the architectural team to ensure structural considerations are incorporated into designs from day one. This close cooperation results into a successful design and translates into buildings that simply work...



Views of Etabs Model





A photograph of a modern operating room. The room features green tiled walls, large windows, and a large circular surgical light fixture hanging from the ceiling. Medical equipment, including a patient table and monitors, is visible. A red semi-transparent box is overlaid on the right side of the image, containing white text.

IHCG understands the specific nature, requirements & the rapid developing sciences/ technologies of the healing & healthcare facilities. Our healthcare experts collaborate with clients and stakeholders to conquer the complex challenges inherent in any healthcare project and bring about a state-of-the-art healthcare facility design, in order to enhance patient health outcomes & raise patient/staff satisfaction.

I H C G

UM DORMAN HOSPITAL

Um Dorman, Sudan



Client

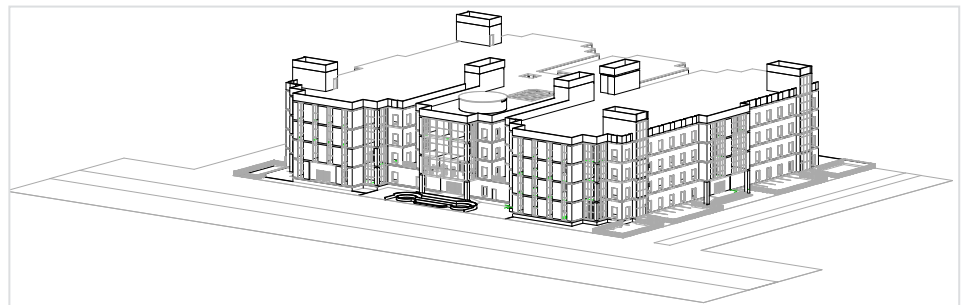
Social Security
Investment
Authority (SSIA)

Services

Medical Planning
Medical Equipment
Planning

Stages

Planning and Studies
Conceptual Design
Schematic Design



**Designing
Healthcare
Facilities**

Um Dorman 200 Bed Hospital is a General Hospital located in Um Dorman City of Sudan, in a plot area of 10,365 sq.m, and foot print of 6,400 sq.m, and built-up area of 27,800 sq.m, in 5 floors. The Client intends to develop 3 general hospitals in different cities around Sudan and Um Dorman Hospital is a Concept of one of them.



First Basement Floor

- 0 Parking
- 1 Public Areas
- 2 Maintenance and Engineering
- 3 Mechanical Services
- 4 Laundry
- 5 Sterilization Unit
- 6 Staff Facilities
- 7 Morgue

Ground Floor

- 20 Public Areas
- 8 Emergency
- 9 Admission and Administration
- 10 Restaurant and Kitchen
- 11 X-Ray
- 12 Laboratories

First Floor

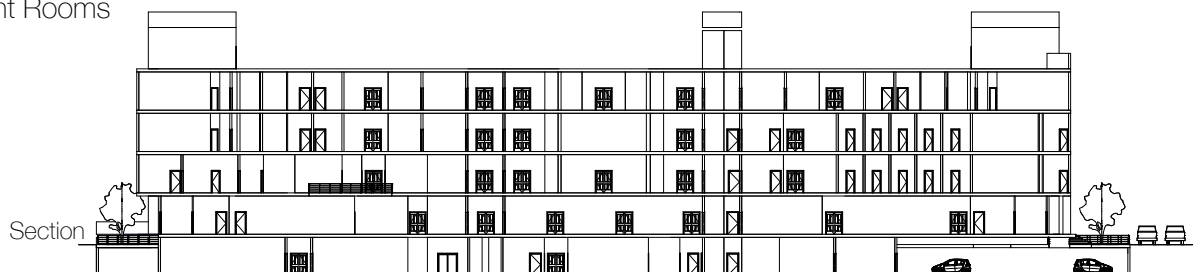
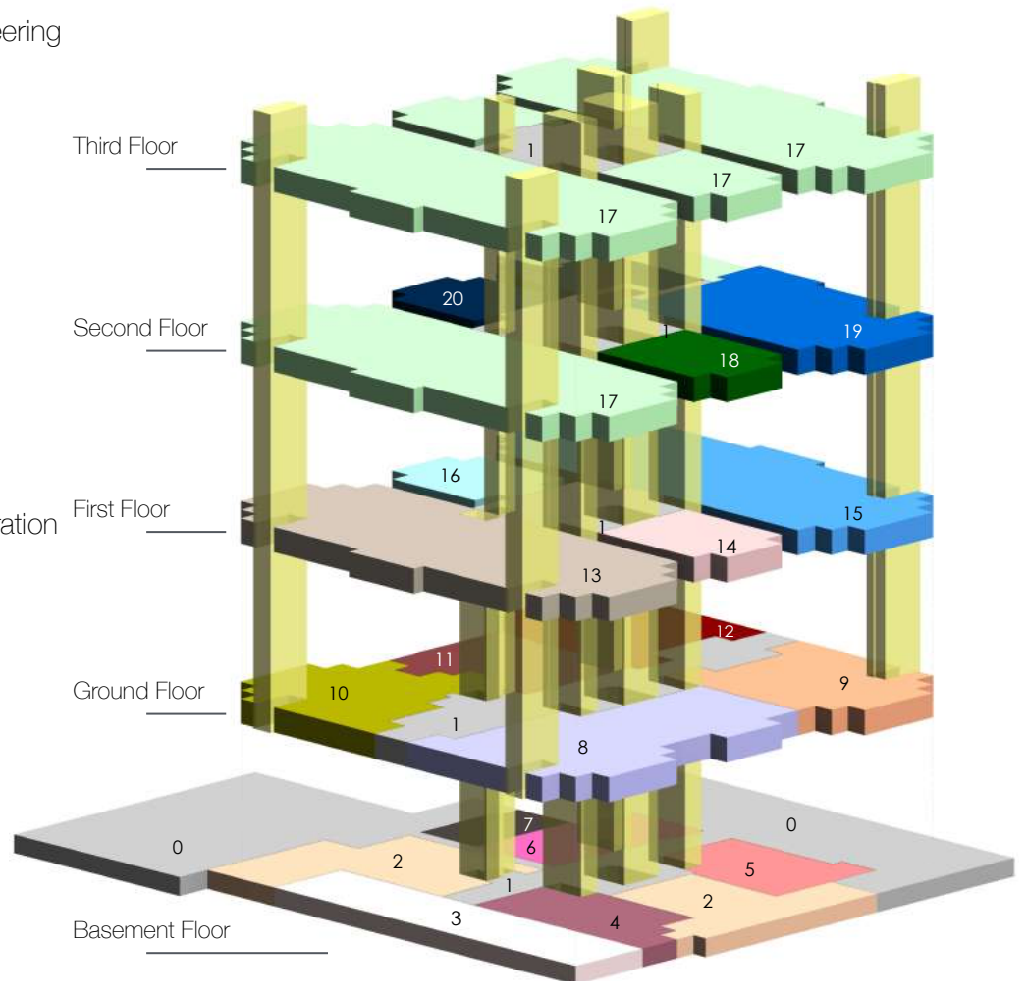
- 1 Public Areas
- 13 External Clinics
- 14 Physical Therapy
- 15 One Day Surgery
- 16 Urology & Nephrology

Second Floor

- 1 Public Areas
- 17 Inpatient Rooms
- 18 Intensive Care
- 19 Surgery Unit
- 20 Obstetrics & Gynaecology

Third Floor

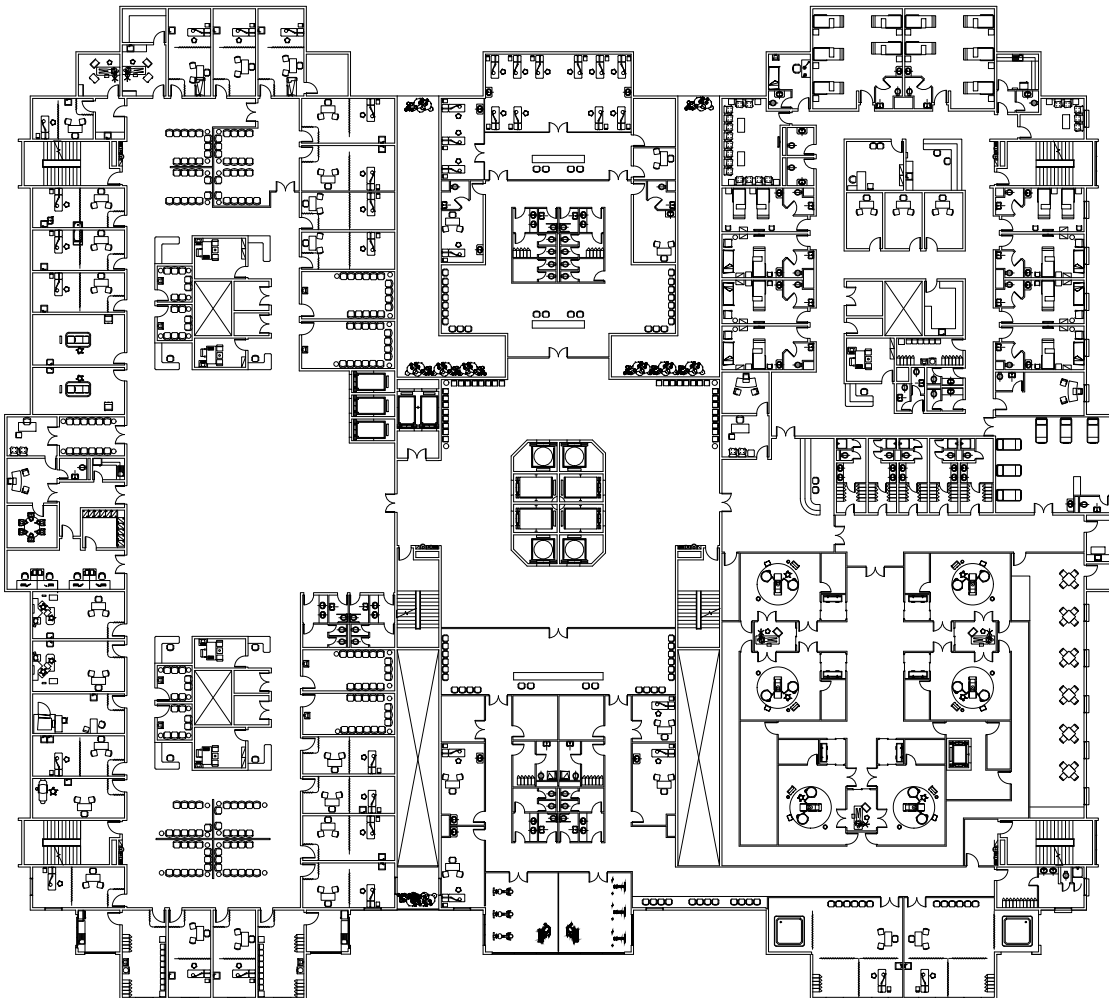
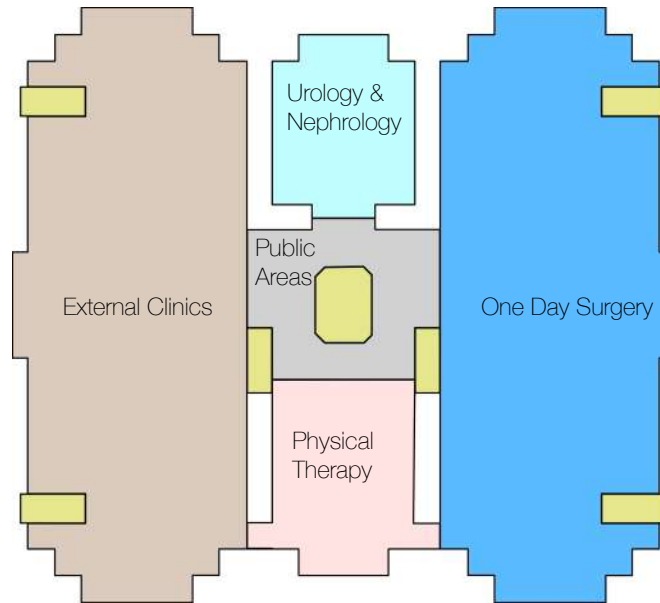
- 1 Public Areas
- 17 Inpatient Rooms

**Architectural
Mass Model**

UM DORMAN HOSPITAL

Cont.

First Floor

Physical
PlanningMedical and
Equipment
PlanningMain
Elevation

We're experts in designing and
delivering complete healthcare
facilities.

KEMPINSKI ROYAL MAXIM HOTEL, 5 STARS

New Cairo, Egypt



Client

Karrar Group

Services

MEP

Stages

Conceptual Design
Preliminary Design
Detailed Design
Tender Documents



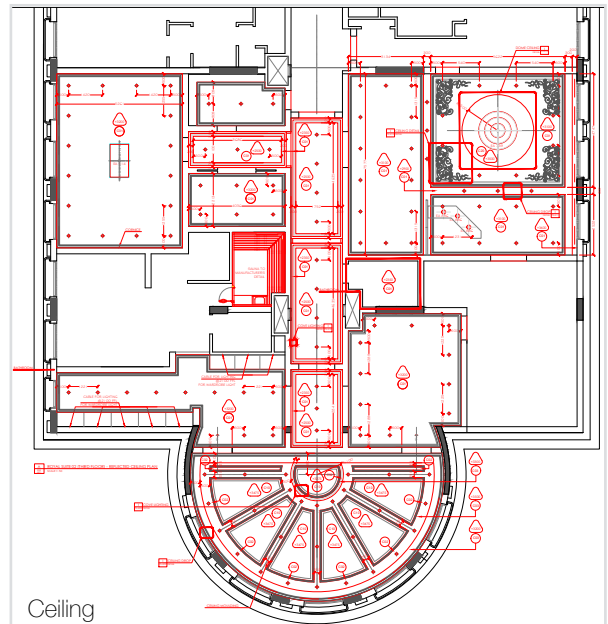
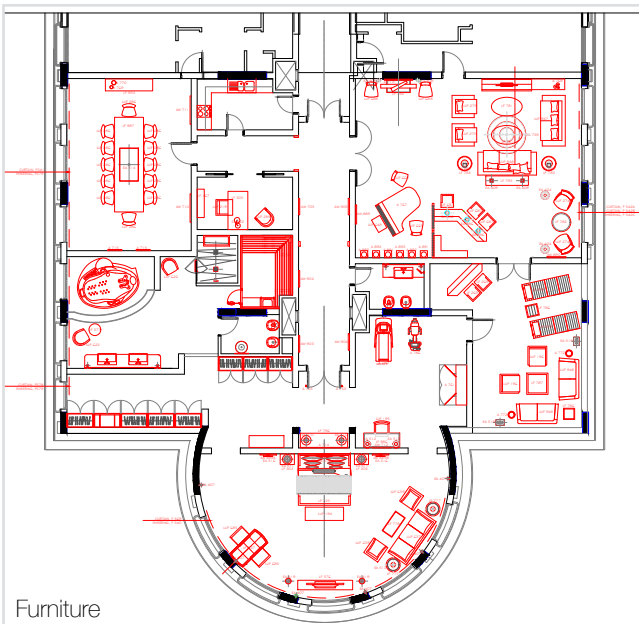
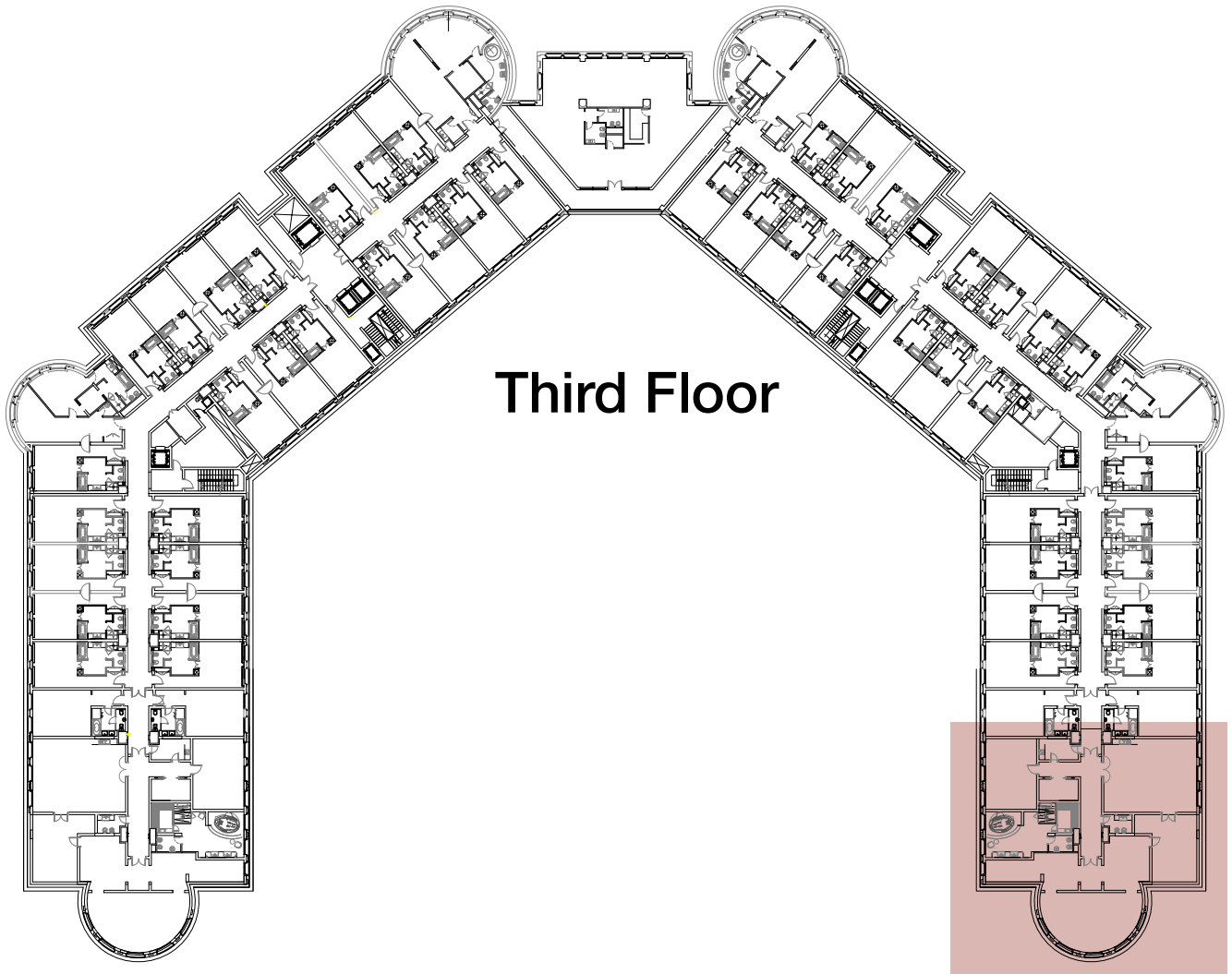
Kempinski Royal Maxim 5-Stars Hotel located in the Ring Road of Cairo, has a plot area of 24,000 sq.m, and foot print of 6,600 sq.m, and built-up of 38,700 sq.m in 6 floors.

The hotel comprise 250 room, the biggest ball room in Egypt, Swimming pool, and Health Club .

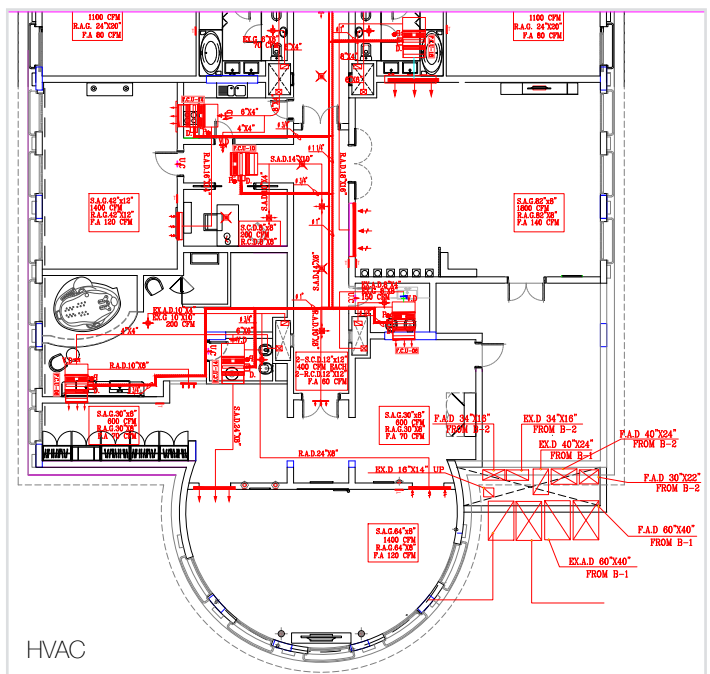
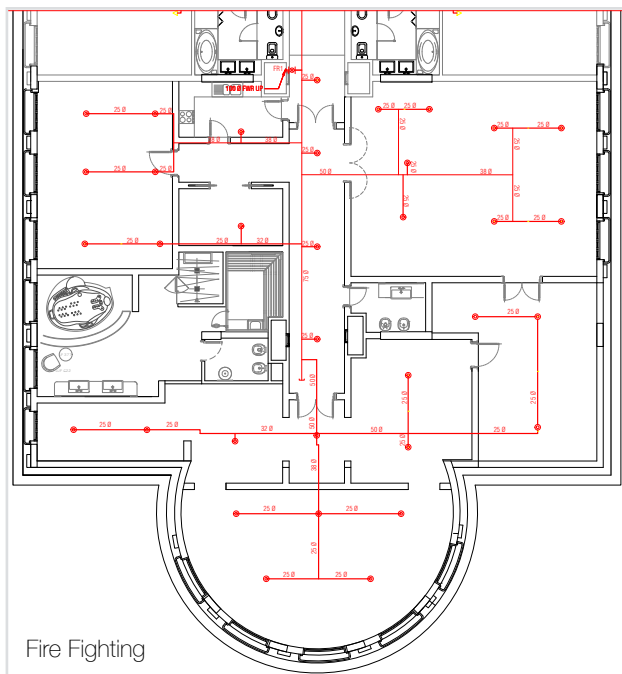
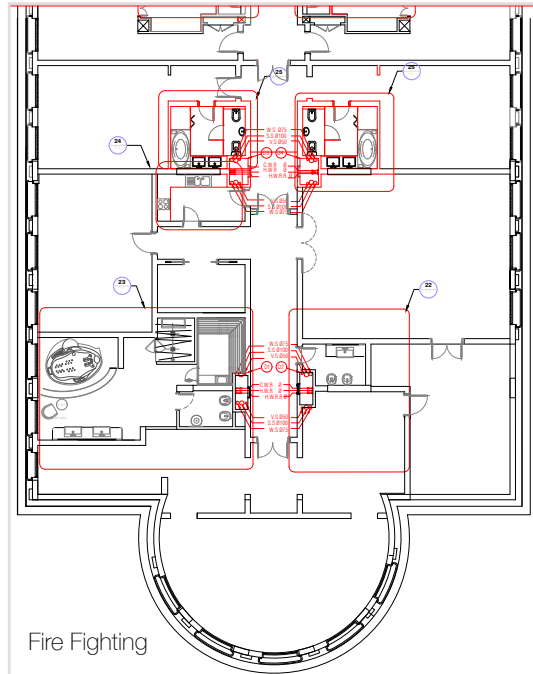
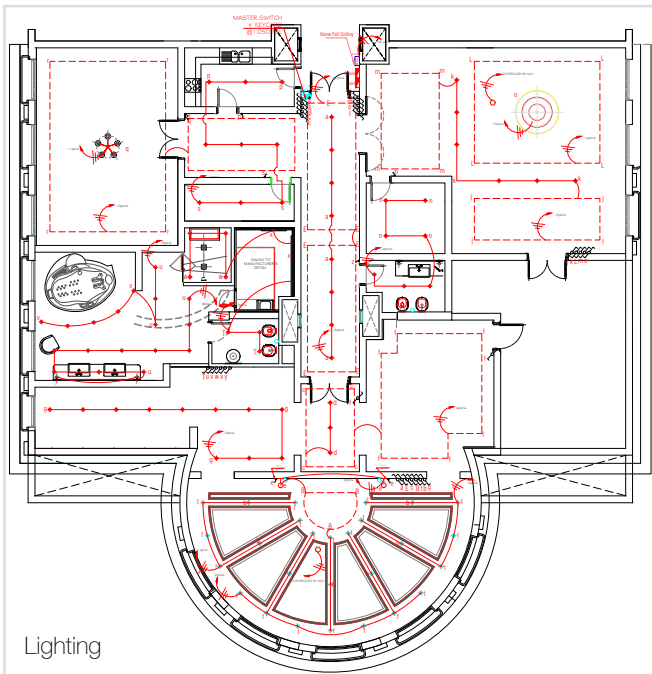


MEP Engineering

Sustainable and energy-efficient buildings require intelligent mechanical, electrical and plumbing solutions. Our MEP engineers are committed to creating high-performance systems, offering clients efficient operations and technological innovation.



KEMPINSKI ROYAL MAXIM HOTEL, 5 STARS Cont.



IHCG experts provide professional value engineering services. We review every part of the project to reach an optimized design, economic, functional and without affecting its efficiencies.



AL QODS BUILDING

Alger, Algeria



Studying & Renovation



Client

Sidar Co.

Services

MEP

Interior Design

Stages

Conceptual Design

Preliminary Design

Detailed Design

Tender Documents

Construction

Supervision

Al Kods mixed use located in Alger City. The mixed-use building has a plot area of 13,528 sq.m, and foot print of 10,860 sq.m, and built-up of 120,414 sq.m in 23 floors.

The mixed-use building has spaces for retail, office building, and residential.

Collaboration

We believe that the most successful, full-bodied design solutions arise from a collaborative process that begins with a holistic approach to problem-seeking.





7th Floor

- Hotel
- Office Spaces
- Restaurant
- Services
- Circulation



Back Elevation



Front Elevation



Side Elevation

Problem-Solving

Before we can solve a problem, we have to identify the core essence of what we are trying to solve. We work intimately with our clients to understand vision first. Problem-seeking and -solving is a dialogue of discovery through respectful interaction with the industry's most inventive multi-disciplinary minds...

NILE GRAND PLAZA

Khartoum, Sudan



Client

Ministry Of
Interior

Services

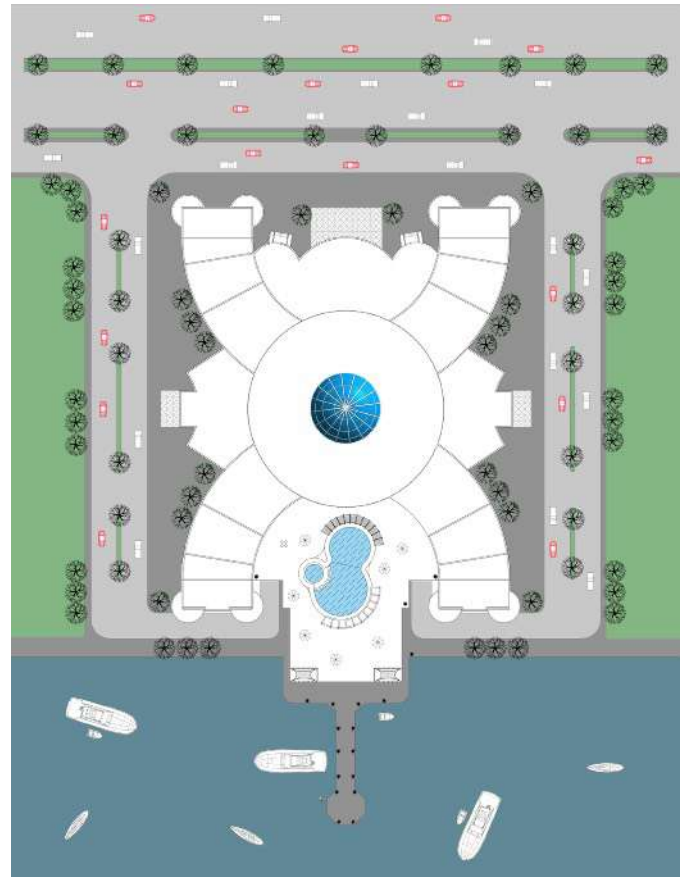
Architectural
Structural
MEP
Interior Design

Stages

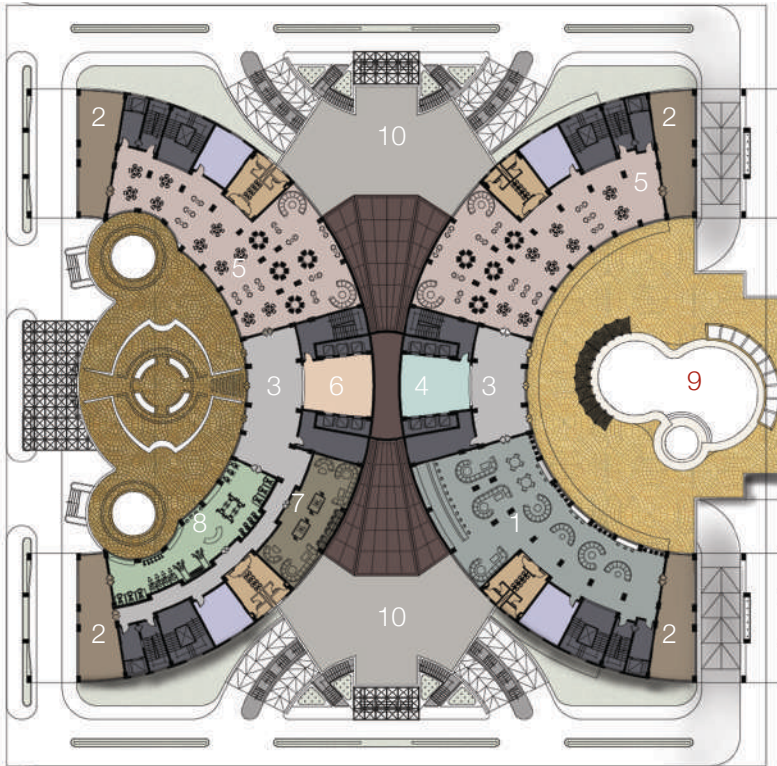
Conceptual Design
Preliminary Design
Detailed Design
Tender Documents

Designing A Remarkable Touch

Nile Grand Plaza is a mixed-use building, located in Khartoum City. The mixed-use building has a plot area of 8,900 sq.m, and foot print of 4,585 sq.m, and built-up of 113,980 sq.m in 31 floors. The mixed-use building comprises 5-stars hotel, retail spaces, and office building, and in-river restaurant.



Plaza Floor



- 1 Coffee Shop
- 2 Terrace
- 3 Lobby
- 4 Hotel Battery
- 5 Restaurant
- 6 Administration Battery

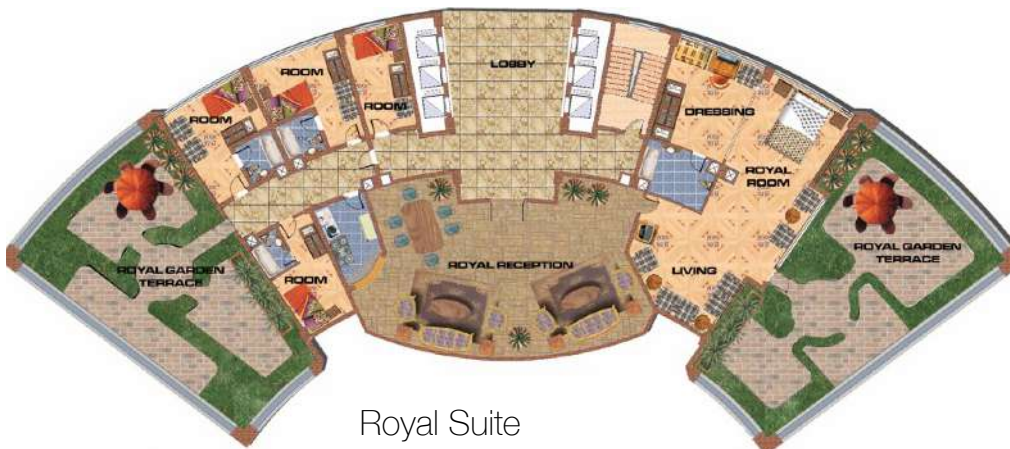
- 7 Recreation Center
- 8 Health Club
- 9 Out Door Pool
- 10 Entrance
- 11 Marina



Standard Suite

Interior Design

We provide Interior Design that offers creative and intelligent responses to to achieve our clients goals and requirements.

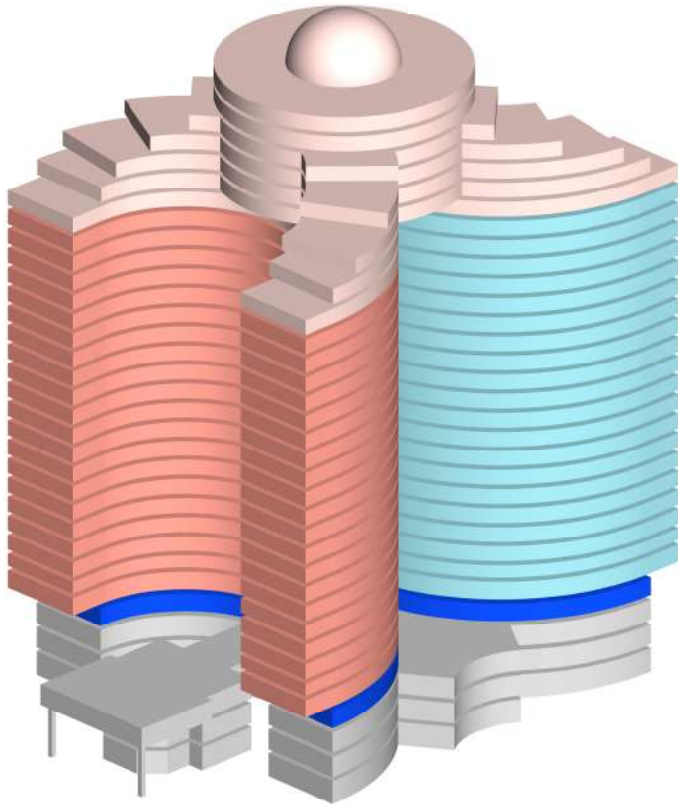


Royal Suite

NILE GRAND PLAZA

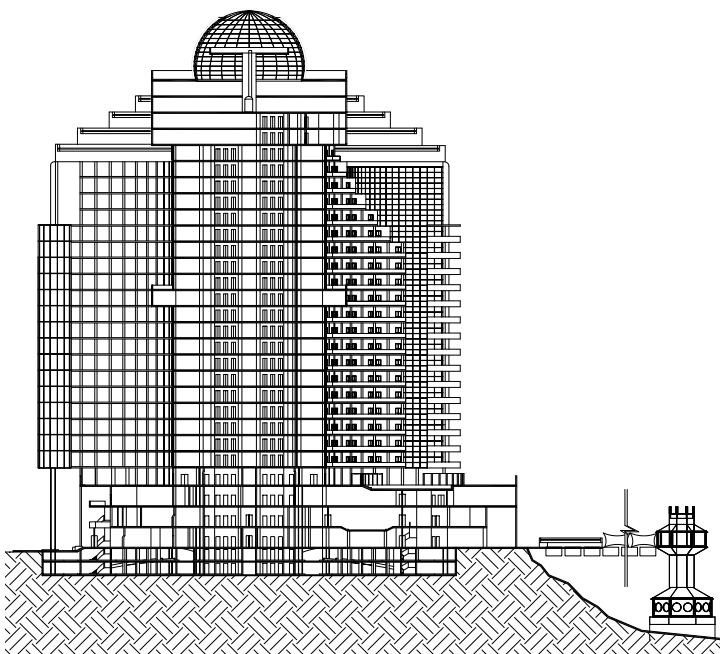
Cont.

Khartoum, Sudan

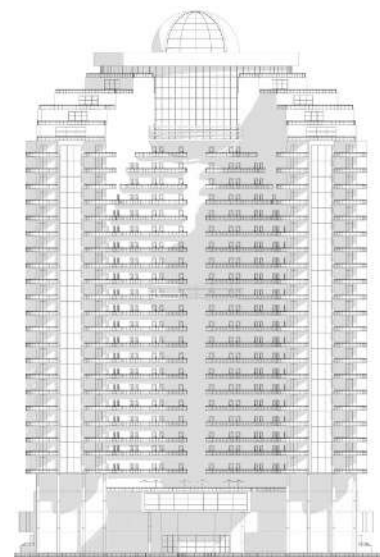


Architectural Mass Model

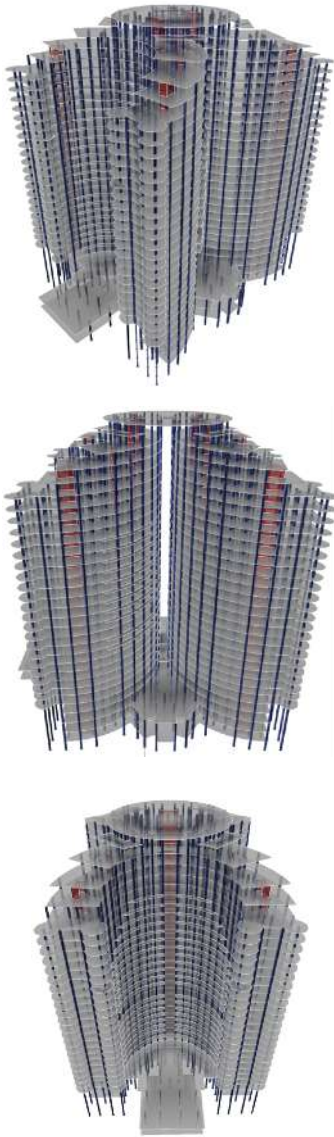
- Offices
- Hotel
- Executive Suites
- Plaza Floor
- Retail



Section A-A



Elevation



Views of Etabs Model

Structural Design

The aspiration of contemporary architecture for Complex Building and gallery buildings presents specific structural engineering challenges. The complex geometry of large open display areas, frequently favoured by gallery designers and curators, is possible by implementing long-span structures. The depth, weight and construction cost of such ambitious structures are often confined and require the appropriate load capacity.

Spaces of Complex Buildings often require a high degree of integration of structure, architecture and building services. We apply multidisciplinary approach to building design to deliver stable, durable and elegant buildings.



5 Stars Hotel,
Office Spaces,
and Retail





We do
architectural
design from our
heart to provide
a remarkable
touch for making
the world a
better place.

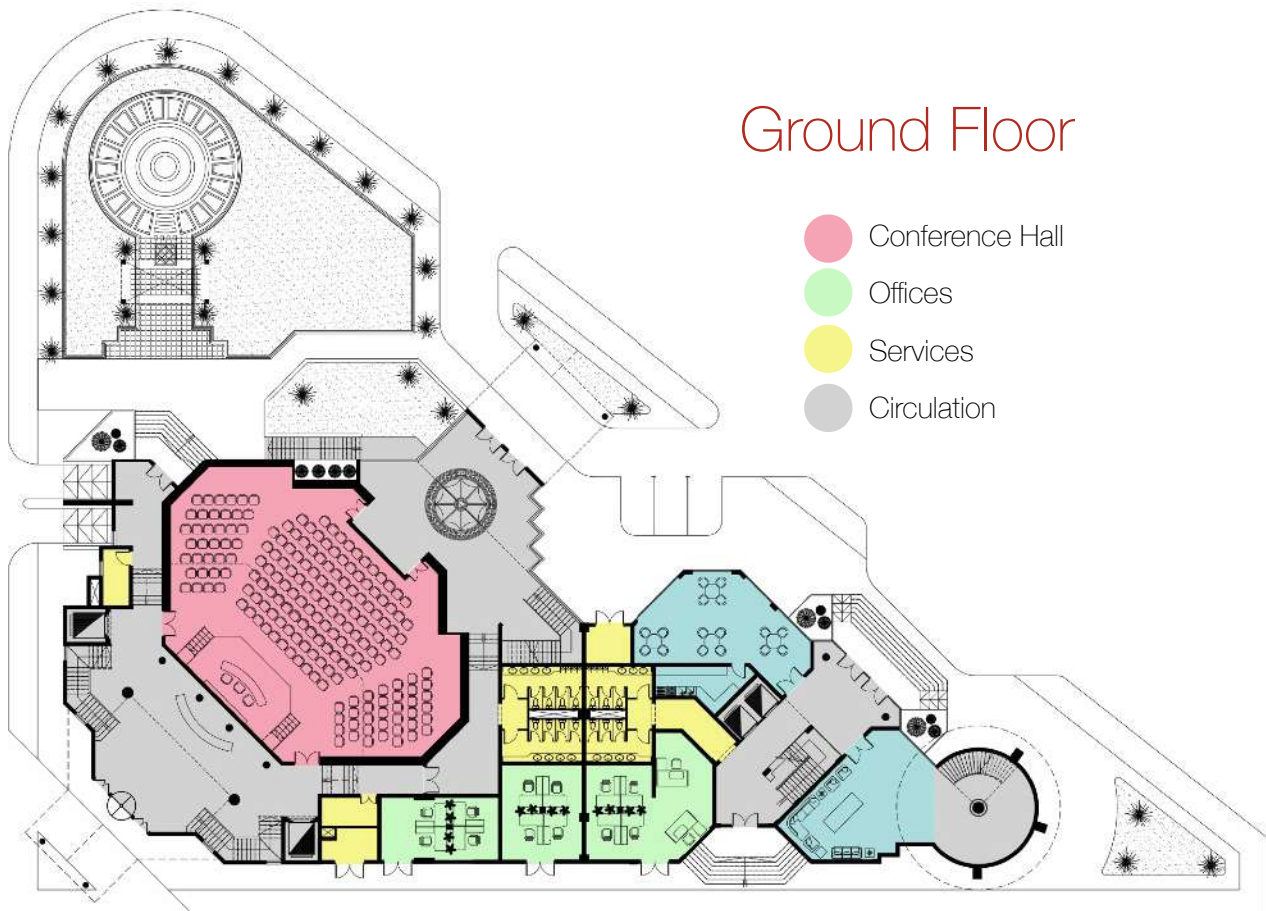
Because we believe good architecture will produce buildings that have long-lasting positive economic, social and environmental impact on communities and organizations.



SINCE 1988
ihcg-corp.com

SUDAN COTTON OFFICE BUILDING

Khartoum, Sudan



Client

Sudan
Cotton Co.

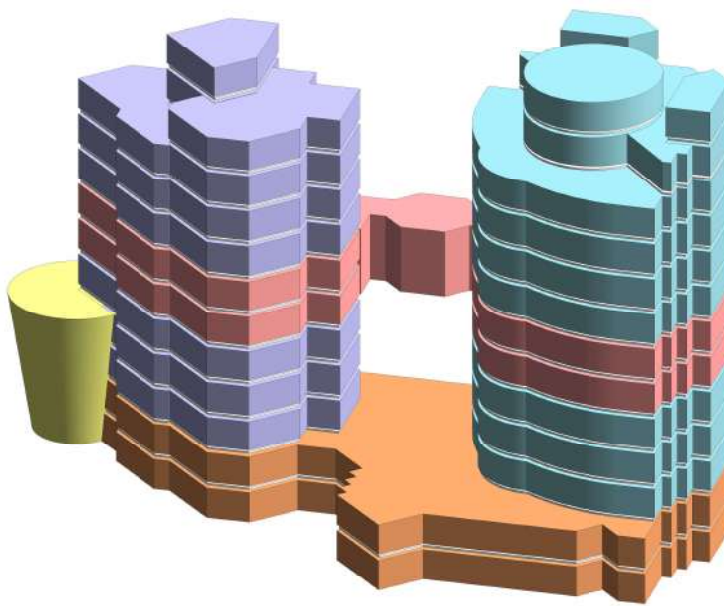
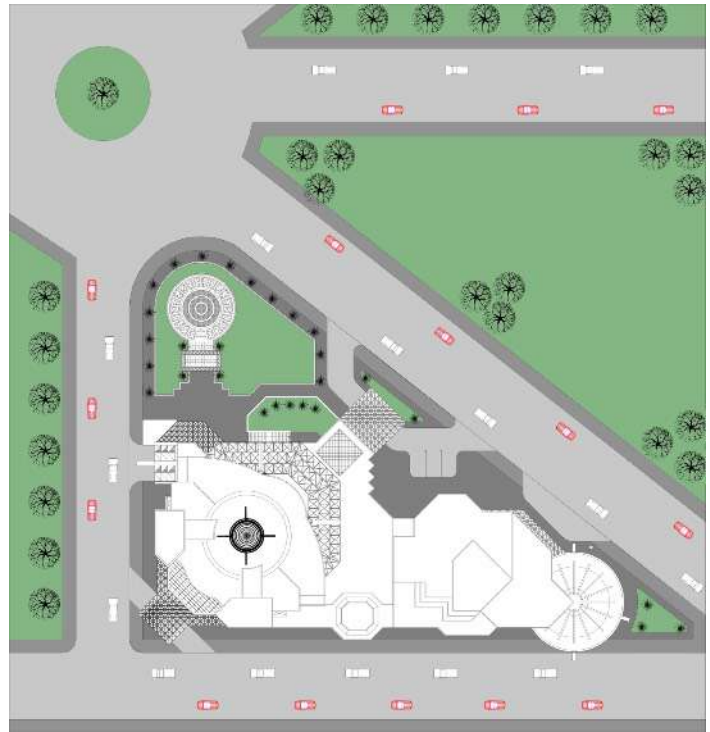
Services

Architectural
Structural
MEP
Interior Design

Stages

Planning and
Programming
Conceptual
Design
Preliminary
Design
Detailed Design

Sudan Cotton Office Building located in Khartoum City, in a plot area of 3,295 sq.m, and foot print of 1,308 sq.m, and built-up of 11,532 sq.m in 14 floors.



Architectural Mass Model

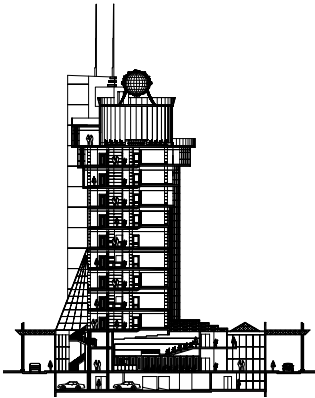
- Cotton Co. HQ
- Business Center
- Office Spaces
- Convention Center
- Circulation



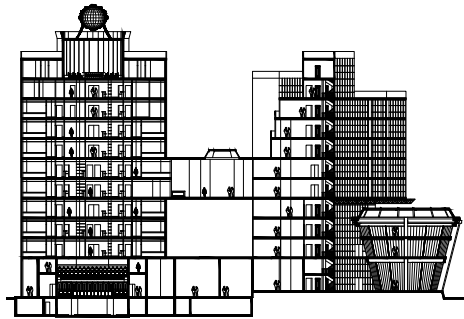
SUDAN COTTON OFFICE BUILDING

Cont.

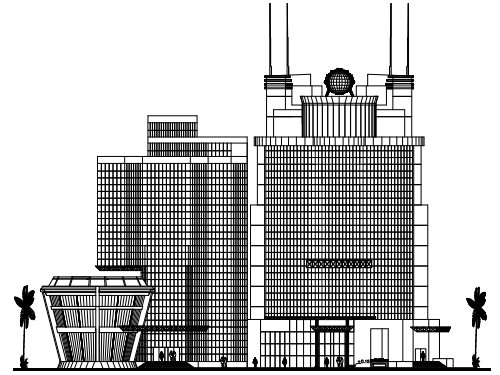
Khartoum, Sudan



Section

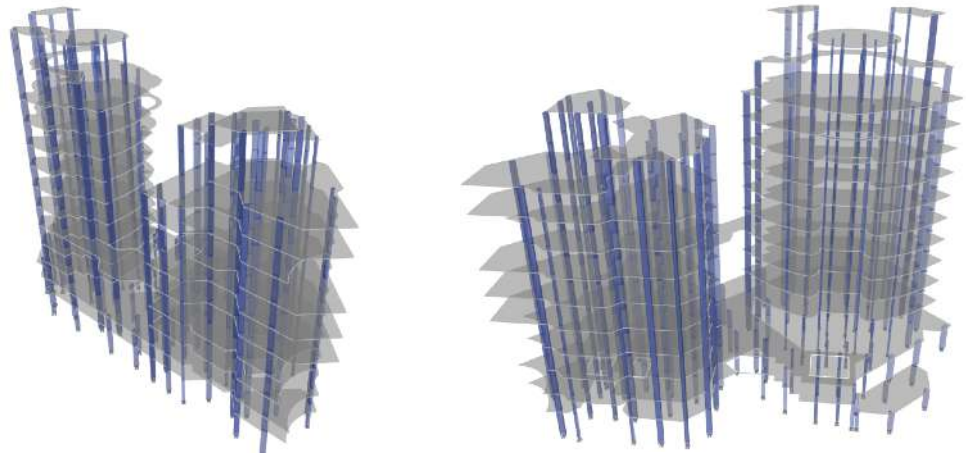


Section



Elevation

Structural Design



Views of Etabs Model



Our beliefs based on
creating and inspiring the
teamwork environment.



since 1988
ihcg-corp.com

Combining our knowledge,
talent, and experience, will
definitely value our work.

WAHAT AL KHARTOUM

Khartoum, Sudan



Client

Wahat AL
Khartoum Co.

Services

Design Review

Architectural
Structural

Design

MEP

Stages

Conceptual Design
Preliminary Design
Detailed Design
Tender Documents
Construction
Supervision

Wahat Al Khartoum is 4 towers mixed-use, located in Khartoum City, the capital of Sudan. Has a plot area of 15,550 sq.m, and foot print of 12,554 sq.m, and built-up of 112,005 sq.m in 18 floors.

The four towers mixed-use made to serve the retail development and offer business spaces for small, medium, and large firms.

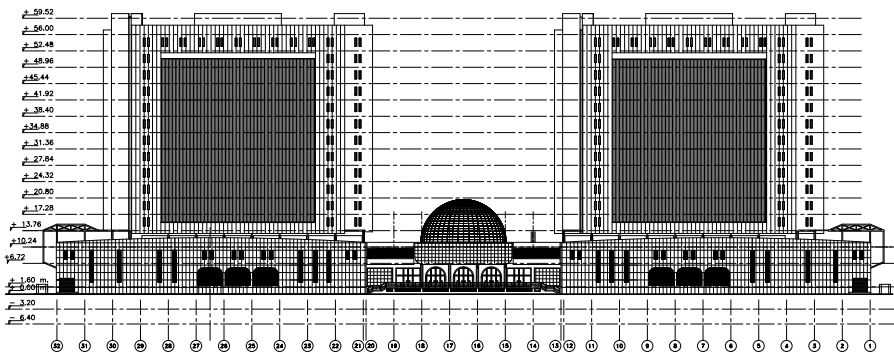
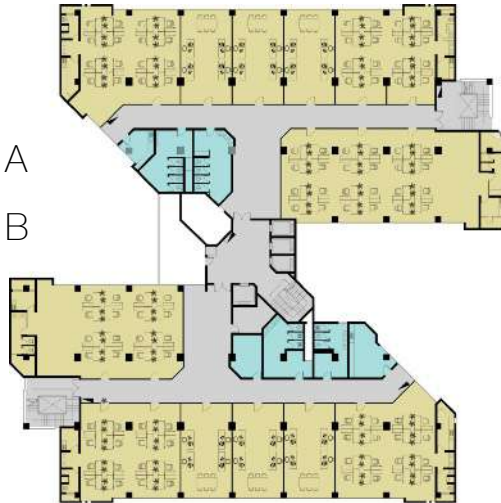
Value Engineering

IHCG provides value engineering and MEP Design services.

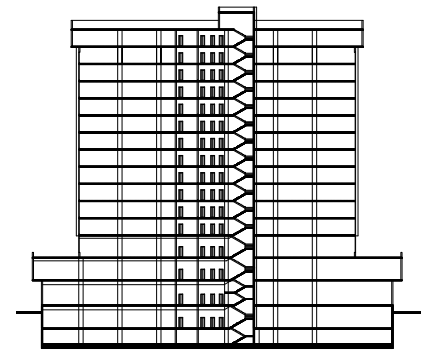
Providing sustainable and energy-efficient buildings require intelligent mechanical, electrical and plumbing solutions. Our MEP engineers are committed to creating high-performance systems, offering clients efficient operations and technological innovation.

Typical Floor

- Office Spaces
- Guest Room Type A
- Guest Room Type B
- Services
- Circulation



Elevation



Section



MEDICAL TOWER

Khartoum, Sudan



Client

Social Security
Investment
Authority (SSIA)

Services

Medical Planning
Medical
Equipment
Architecture
Structure
MEP
Interior Design

Stages

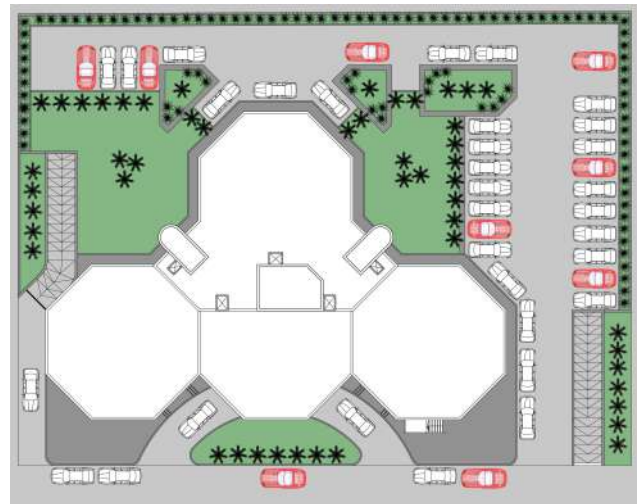
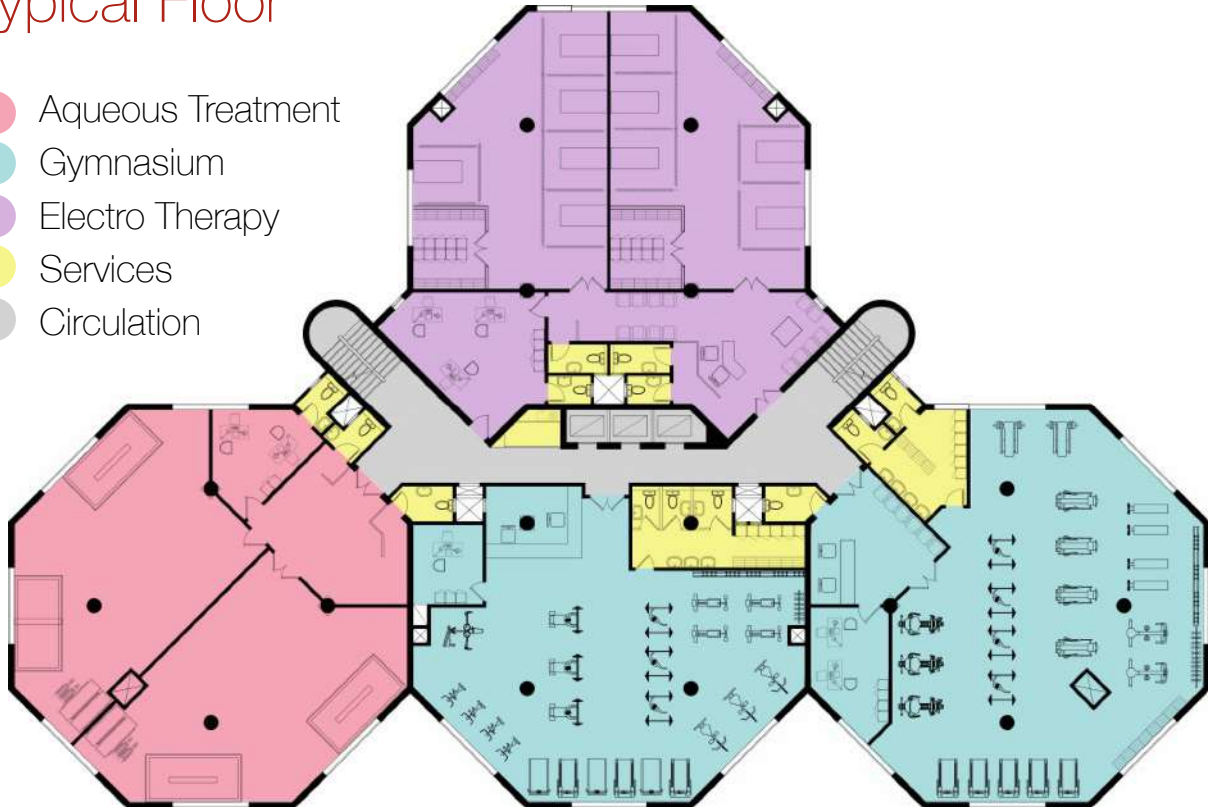
Planning and Studies
Conceptual Design
Schematic Design
Design Development
Detailed Design
Tender Documents
Construction Supervision

Medical Tower located in Khartoum, in a plot area of 3,300 sq.m, and foot print of 970 sq.m, and built-up of 17,630 sq.m in 15 floors. The Medical Complex comprise Clinics Centre, and other medical services.



Typical Floor

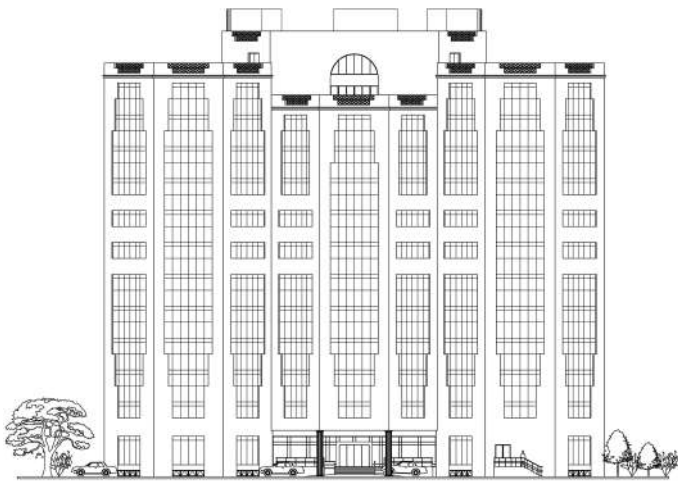
- Aqueous Treatment
- Gymnasium
- Electro Therapy
- Services
- Circulation



MEDICAL TOWER

Cont.

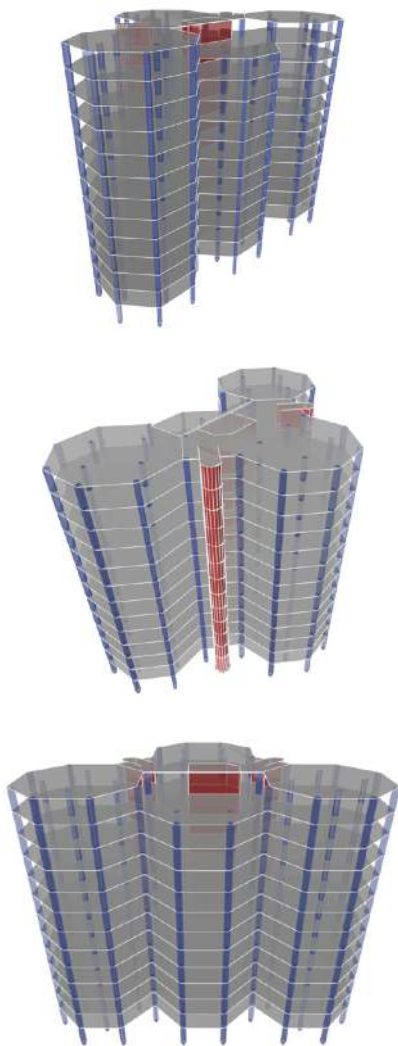
Khartoum, Sudan



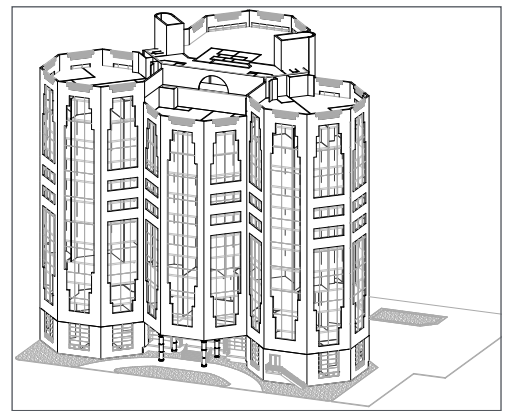
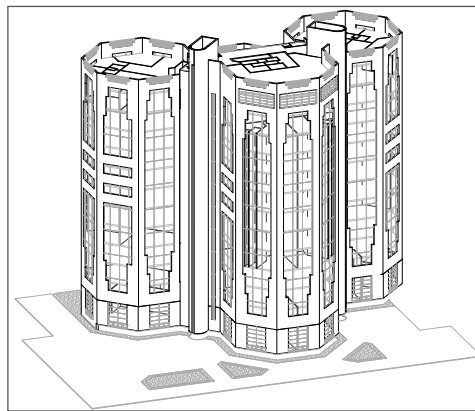
Elevation



Section



Views of Etabs Model



IHCG is committed to the quality of every step of the way, driving innovation to achieve the timely, efficient, and cost-effective delivery of programs. IHCG is considered an expert in providing full engineering consultancy services for healthcare facilities.



WAHRAN COMPLEX

Wahran, Algeria

Client

Sidar, Co.

Services

Architectural

Structural

MEP

Interior Design

Stages

Conceptual Design

Preliminary Design

Detailed Design

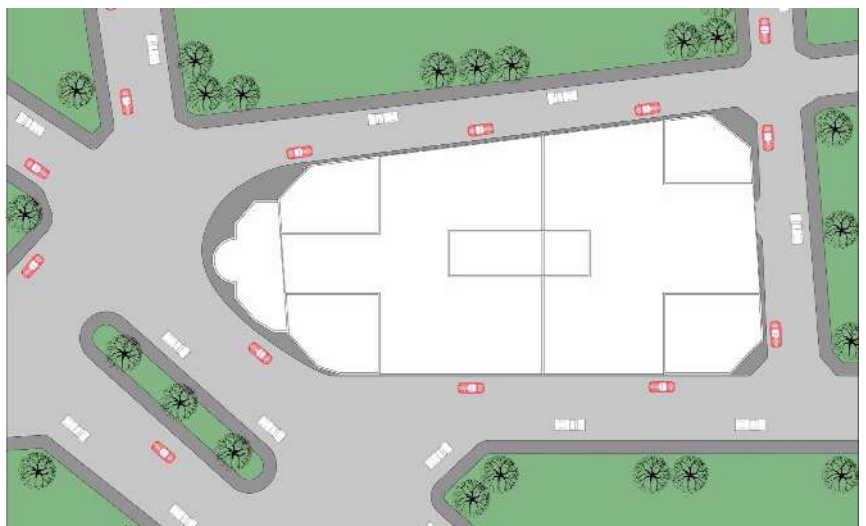
Tender Documents

Construction

Supervision

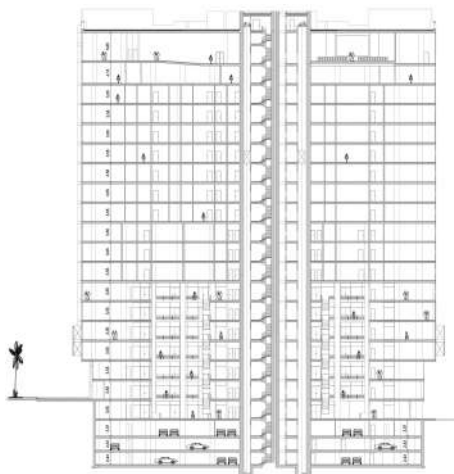
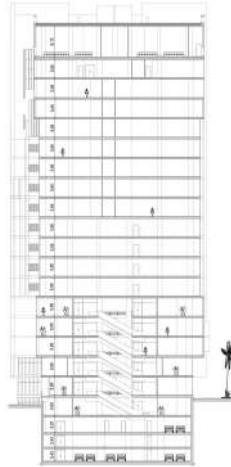
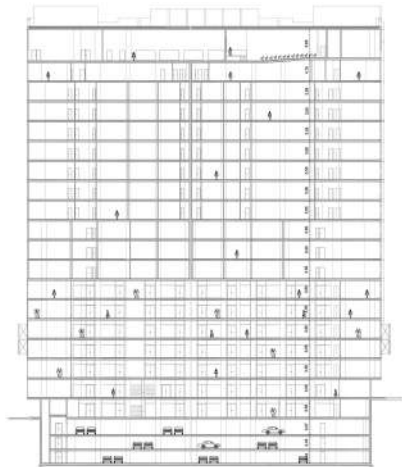
Wahran Complex located in Wahran City. The mixed-use building has a plot area of 2,930 sq.m, and foot print of 2,110 sq.m, and built-up of 50,700 sq.m in 24 floors.

The mixed-use building has spaces for retail, office building, and residential.



Ground Floor

- Retail
- Restaurants and Cafes
- Services



Sections

Programming

We begin each relationship using listening as our most powerful tool. Using your goals, objectives and space requirements, we develop innovative, imaginative, highly functional and operationally efficient solutions. Our ability to understand your unique needs and apply our expertise to enhance your vision is second to none.



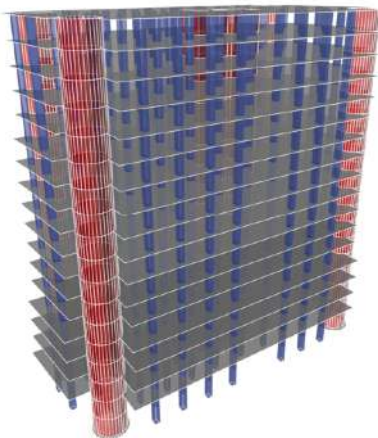
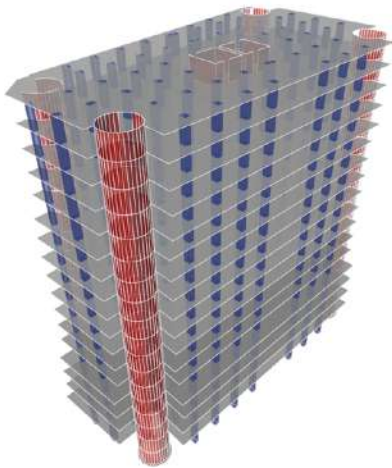
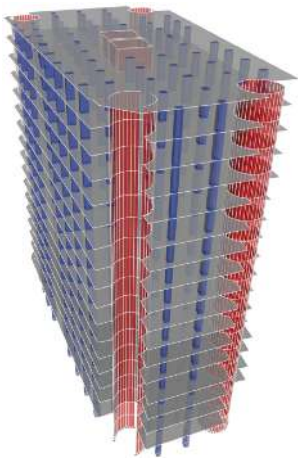
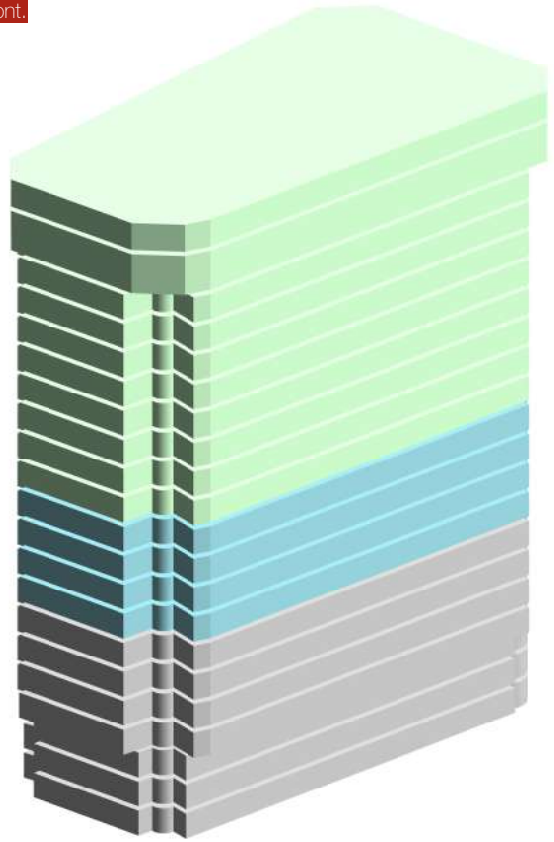
WAHRAN COMPLEX

Cont.

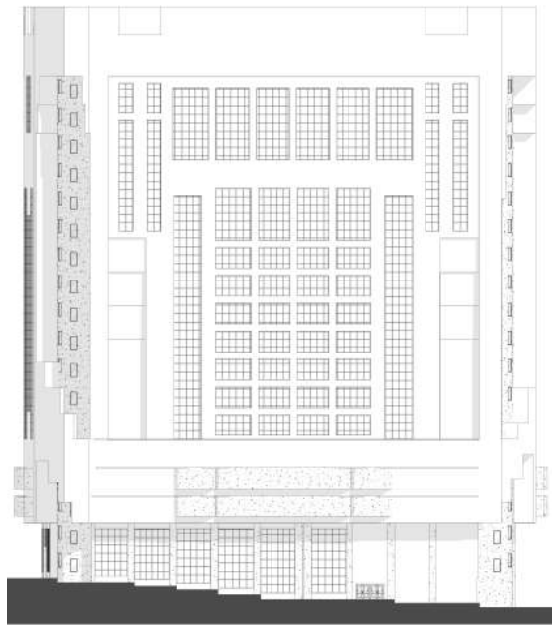
Wahran, Algeria

Architectural Mass Model

- Offices
- Apartments
- Retail



Views of Etabs Model



Elevation



Our comprehensive architectural services include conceptual and schematic design, design development, detailed design and construction documentation, assisting with contractor bidding and negotiation and construction contract administration.



since 1988
ihcg-corp.com

AL FAROUK OMAR MOSQUE

Gunzoor East, Tripoli, Libya



Client

Confidential

Services

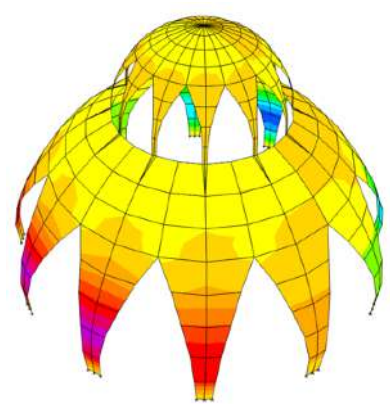
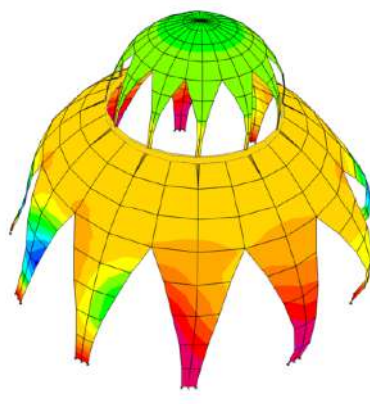
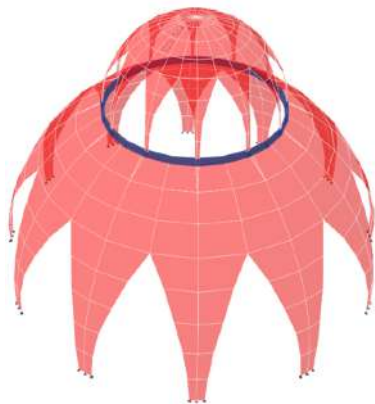
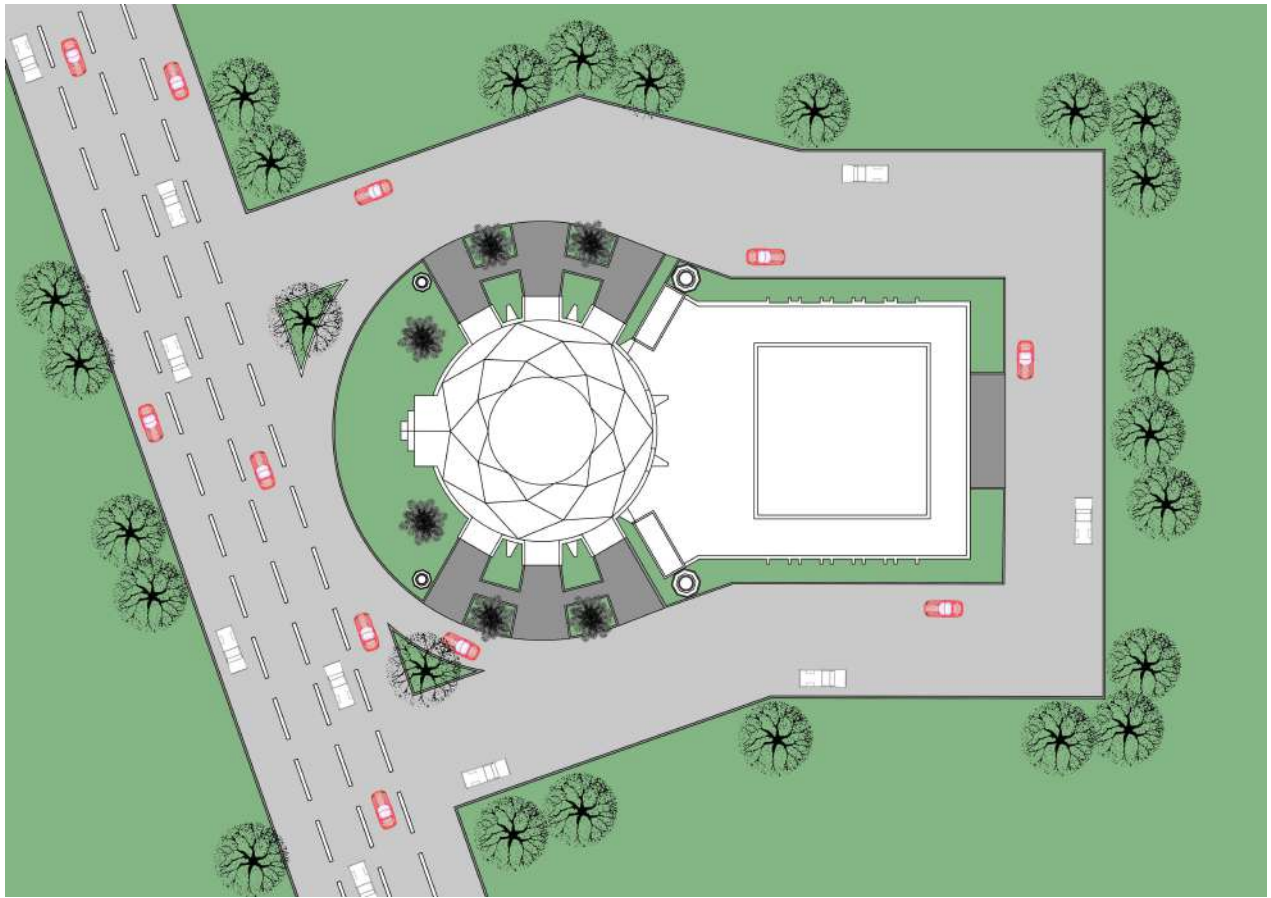
Architectural,
Structural, MEP,
Interior Design

Stages

Conceptual
Design
Preliminary Design
Detailed Design
Tender
Documents



Al Farouk Omar Mosque located in Gunzoor East of Tripoli, in a plot area of 2,120 sq.m, and foot print of 1,100 sq.m, in 1 floors. The mosque includes Event Hall, with supplement small halls.



ETABs Model
and results under
applied vertical
and lateral loads



NATIONAL GENE BANK

Giza, Egypt



Client

Agriculture Research
Centre

Services

Architectural
Interior Design
Structural
MEP

National Gene Bank located in Giza, in a plot area of 486 sq.m, and foot print of 4,810 sq.m, and built-up of 13,900 sq.m in 4 floors. The bank comprise labs, refrigerators for conservation of genetic genes, and lecture halls and administrative offices.

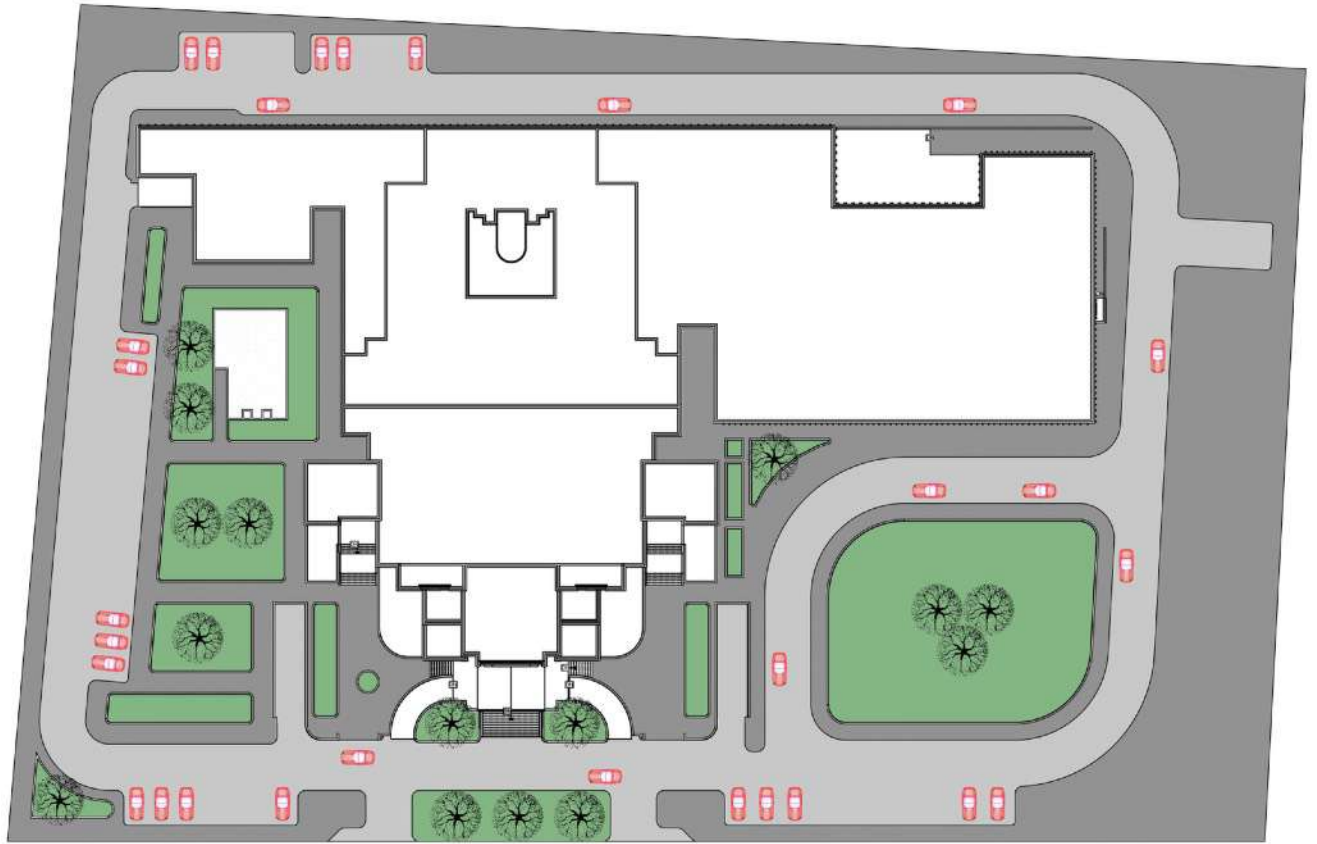
Stages

Conceptual Design
Preliminary Design
Detailed Design

In Association with Philip C. Stanwood, USA.



Section



Elevations

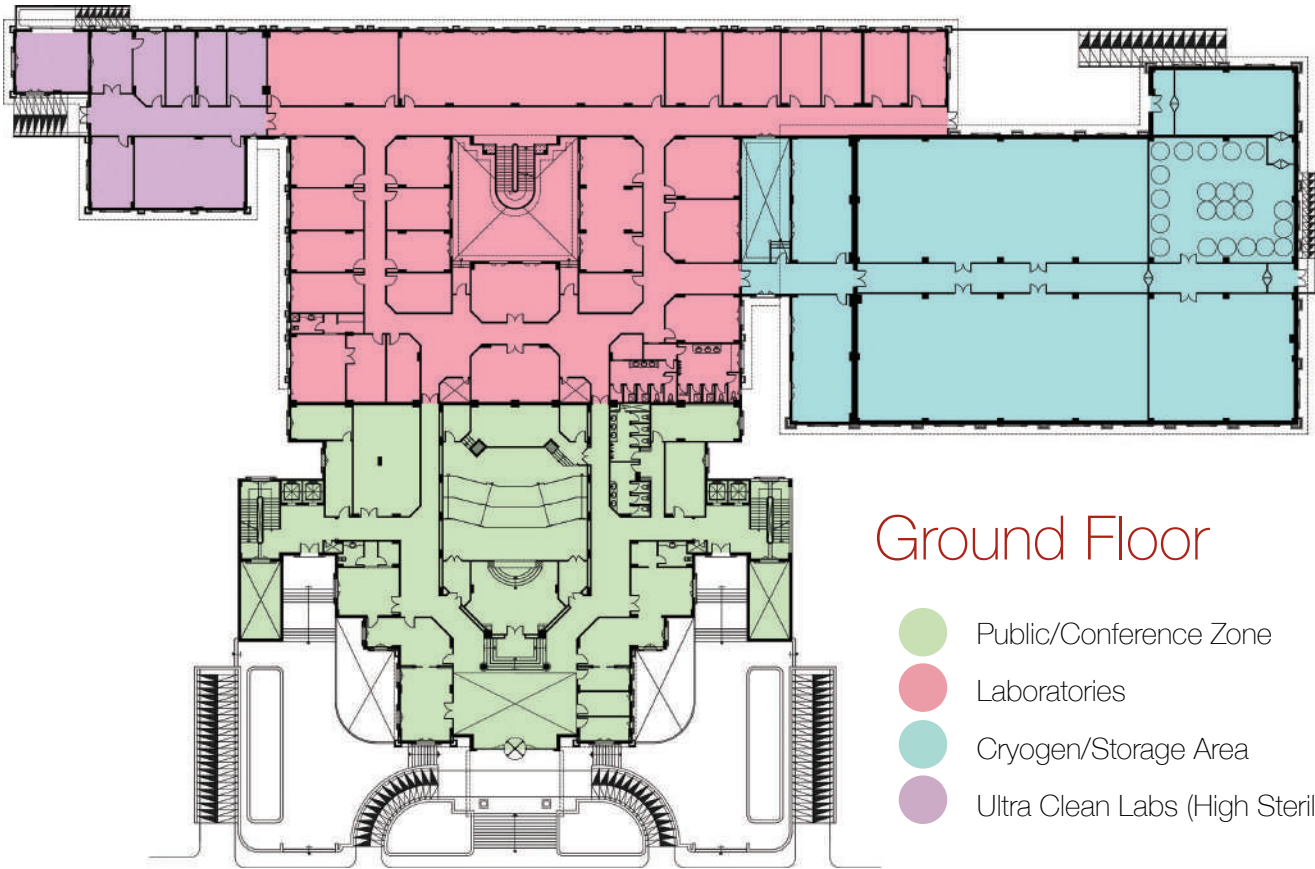


Architecture
embodies all we
touch

NATIONAL GENE BANK

Cont.

Giza, Egypt



Planning & Development

The planning and development is the service that requires a global experience with a tremendous local touch. We always look for the entire picture so we can handle issues of site analysis, access, circulation, parking, urban design, local development guidelines and placemaking.





IHCG provides building design services using Building Information Modeling (**BIM**) Technology.

BIM is a digital representation of the physical and functional characteristic of a facility; a shared knowledge resource for information about a facility, forming a reliable basis for decisions during its facility life-cycle, from earliest conception stage, and up to the construction stage.

I H C G

NIYALA HOTEL, 4 STARS, 120 ROOM

Niyala, Sudan



Client

Ministry of Interior

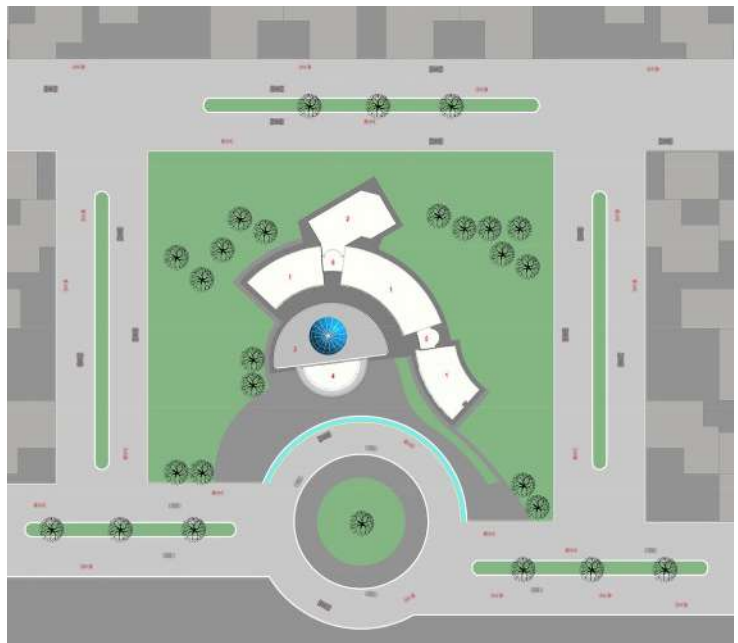
Services

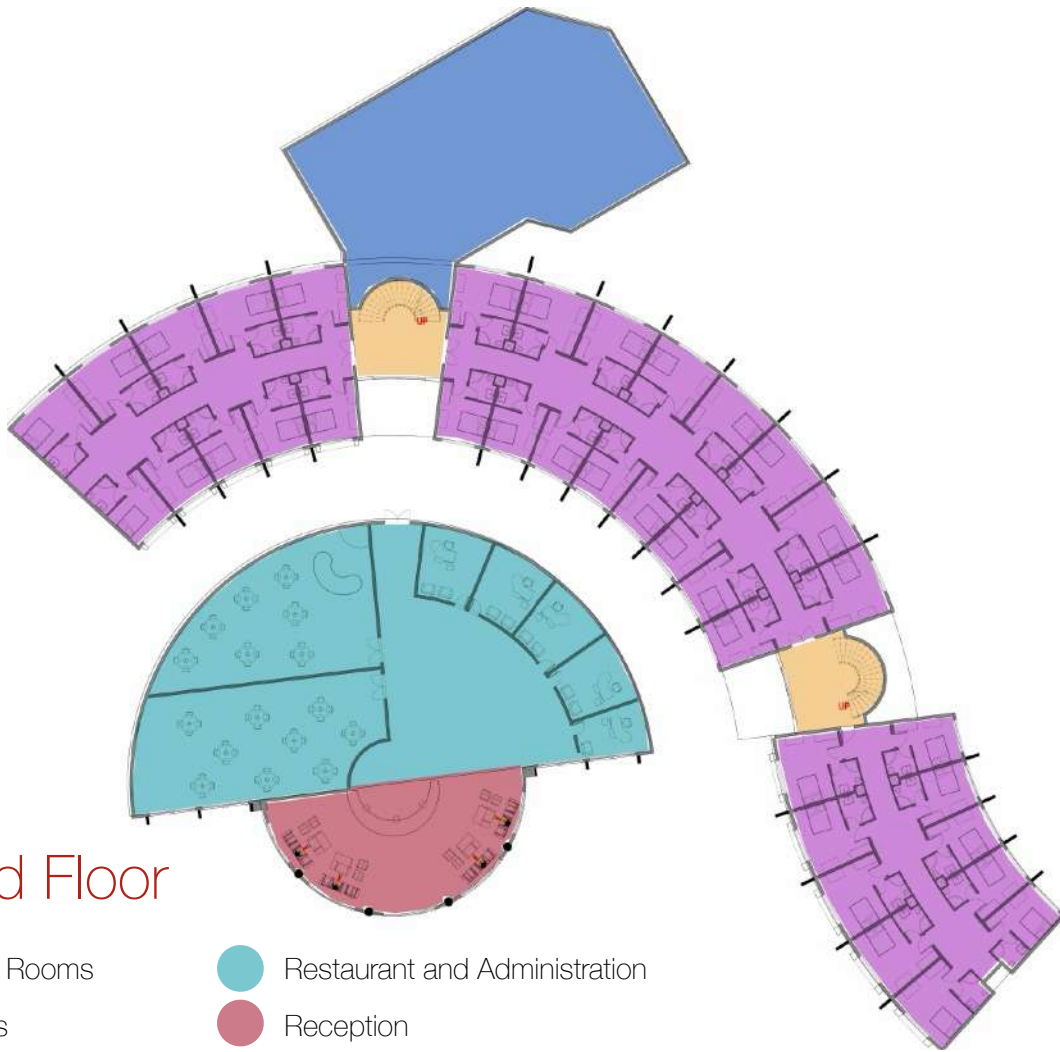
Architectural
Structural
MEP
Interior Design

Stages

Conceptual Design
Preliminary Design
Detailed Design

Niyala 4-Stars Hotel located in Niyala City, has a plot area of 4,466 sq.m, and foot print of 2,075 sq.m, and built-up of 10,375 sq.m in 5 floors. The hotel comprise 120 room, Swimming pool, and Health Club.



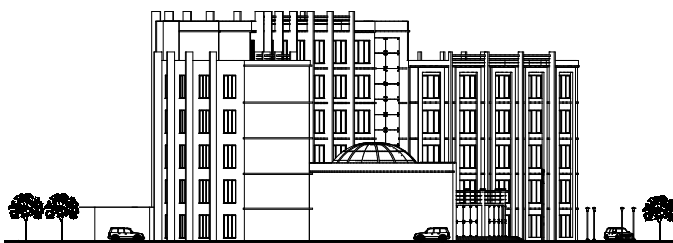
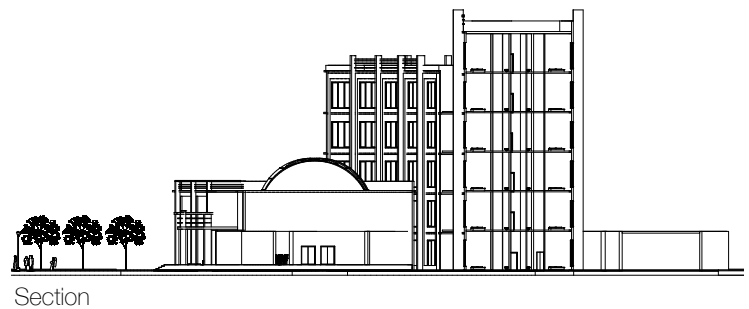


Ground Floor

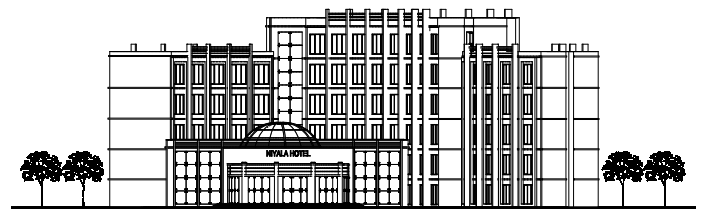
- Guest Rooms
- Restaurant and Administration
- Utilities
- Reception
- Circulation

Creation

Our teams are well organized, led by experienced design principals and designers who are responsible for the project from initial conception through the construction phase.



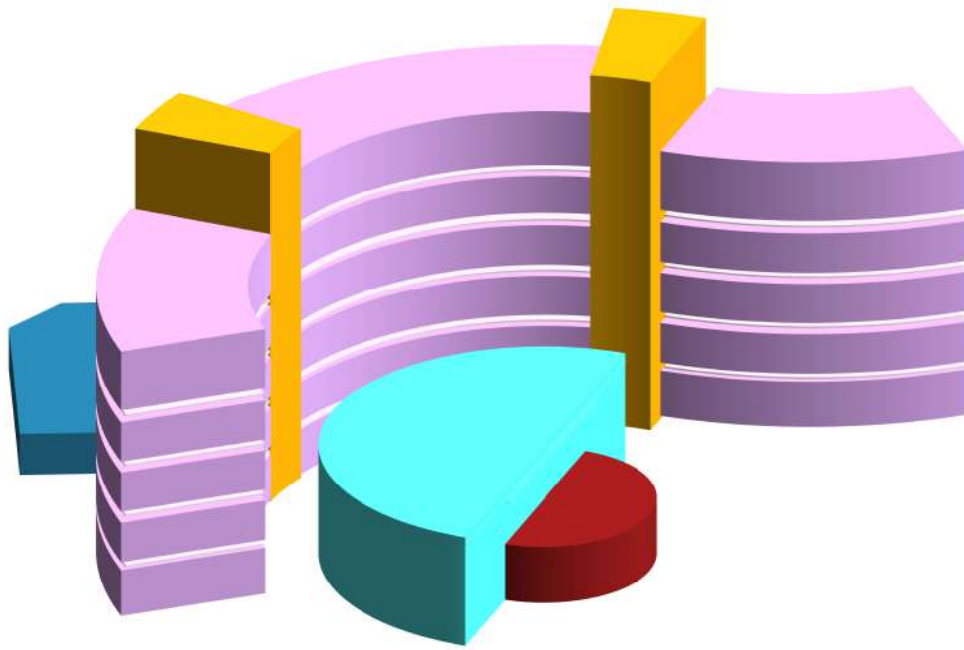
Elevations








NIYALA HOTEL, 4 STARS, 120 ROOM

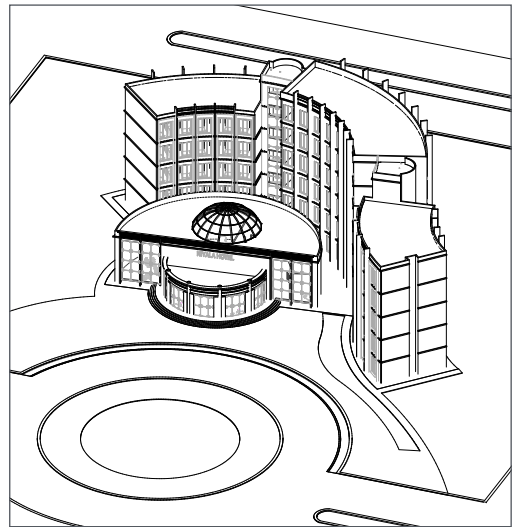
Cont.

Niyala, Sudan



Architectural Mass Model

-  Hotel Guest Rooms
-  Utilities
-  Circulation
-  Restaurant and Administration
-  Reception



We are using BIM software designing our projects. Each project at IHCG will have a better definition of all project elements in 3D model which provides a virtual model of all building systems that can effectively reduce interferences, RFIs, and change orders, and save time and reduce cost.



Our team leaders understand how to proactively work with the entire project team through the development of a Project to ensure the project is within budget, and the project schedule are achieved.

ANDA COMPLEX

Khartoum, Sudan



Client

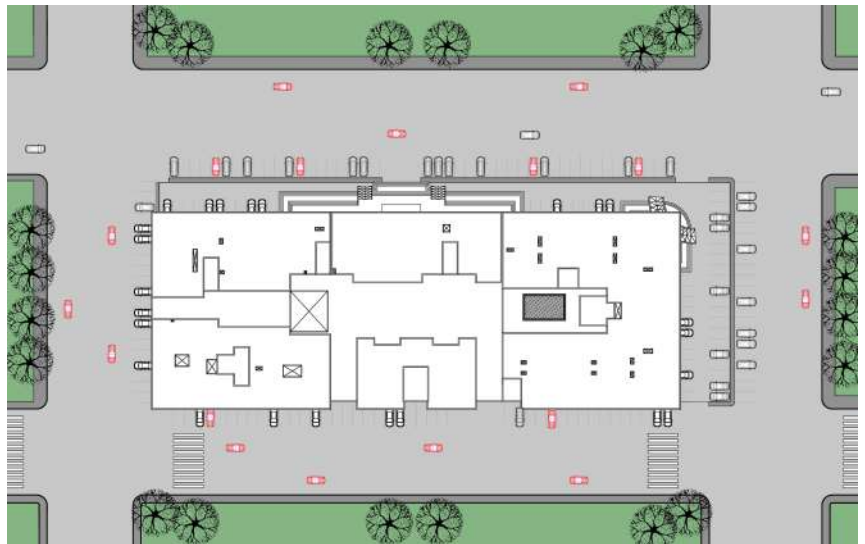
Al Rowad Co.

Services

Architectural
Structural
MEP
Interior Design

Stages

Conceptual Design
Preliminary Design
Detailed Design
Tender Documents



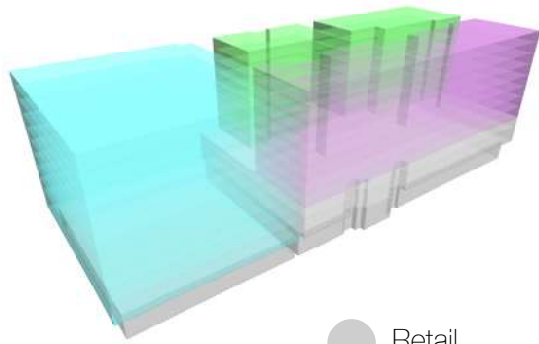
The Anda Complex located in Khartoum, the capital of Sudan. Has a plot area of 6,500 sq.m, and foot print of 4,880 sq.m, and built-up of 53,250 sq.m in 15 floors.

The mixed-use building comprise 4-stars hotel, retail spaces, office building, luxury residential apartments.



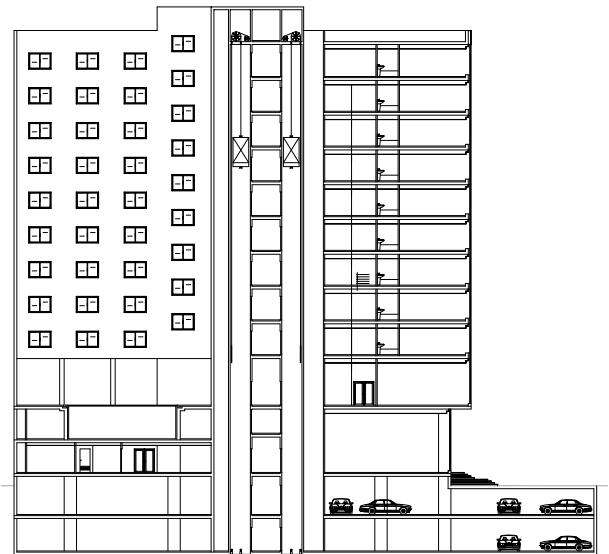
Typical Floor

- Office Spaces
- Hotel Guest Rooms
- Luxury Residential
- Circulation

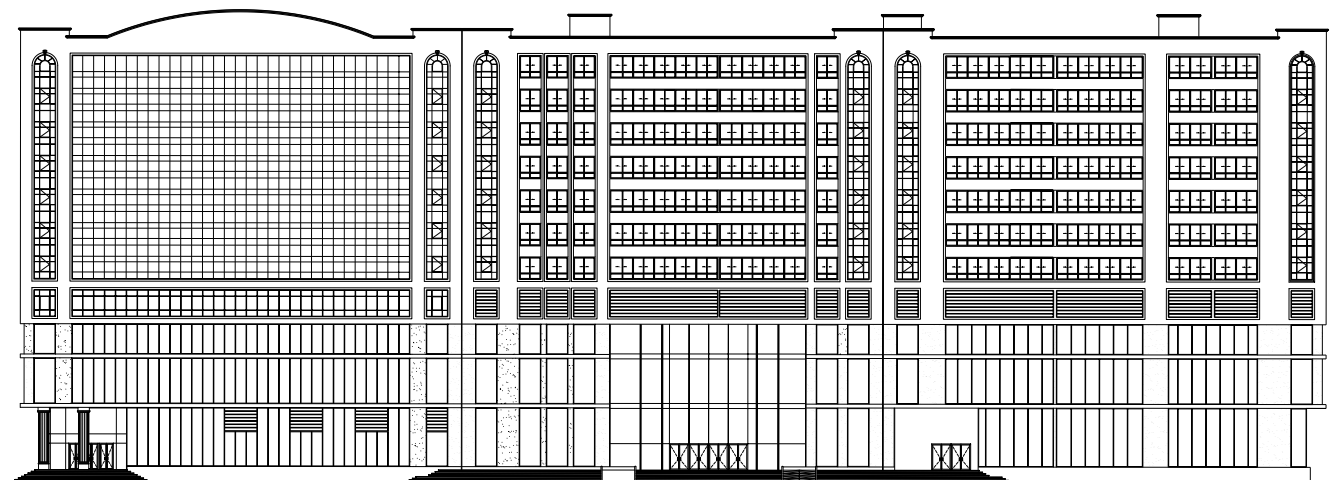


Architectural Mass Model

- Retail
- Hotel
- Offices
- Luxury Residential



Section



Elevation

KHARTOUM WORLD TRADE CENTRE (KWTC)

Khartoum, Sudan

Client

Ministry Of Interior

Services

Architectural

Structural

MEP

Interior Design

Stages

Conceptual Design

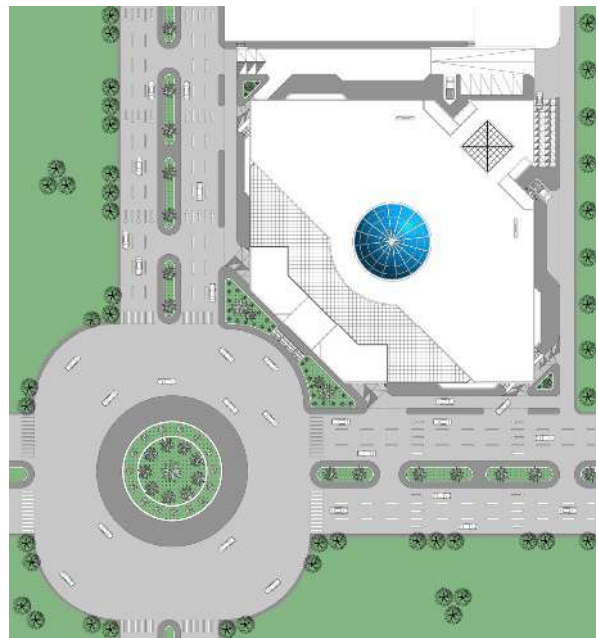
Preliminary Design

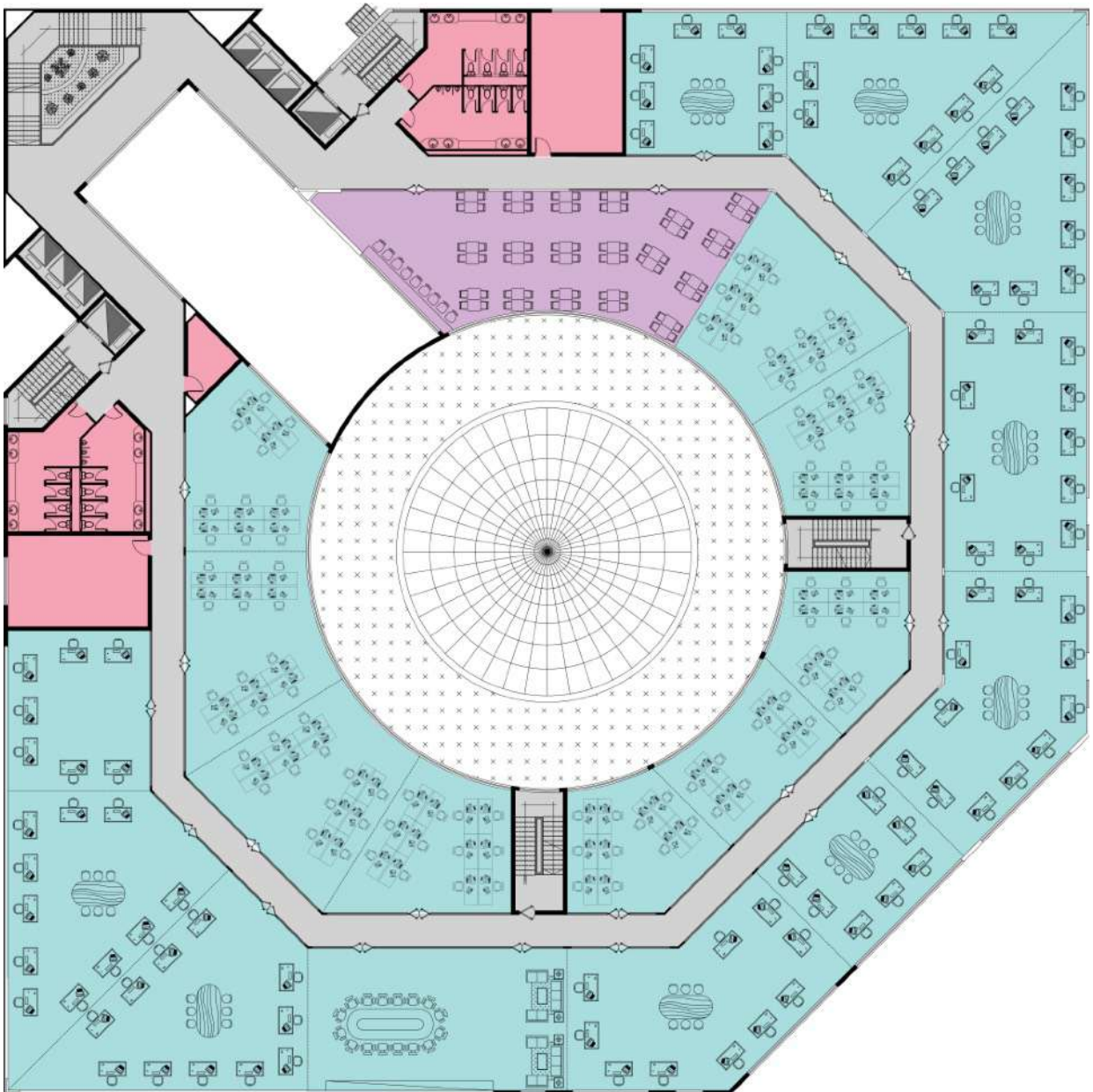
Detailed Design

Tender Documents







Khartoum World Trade Centre is a mixed-use building, located in Khartoum City. The mixed-use building has a plot area of 6,680 sq.m, and foot print of 3,853 sq.m, and built-up of 112,950 sq.m in 28 floors. The mixed-use building made to serve the retail development and offer business spaces for medium and large firms.





Typical Floor

-  Office Spaces
-  Lounge/ Break Area
-  Services
-  Circulation

Architecture

embodies all we touch. We are a combination of designers, experts, consultants, and coordinators that works together for creating remarkable places..

KHARTOUM WORLD TRADE CENTRE (KWTC)

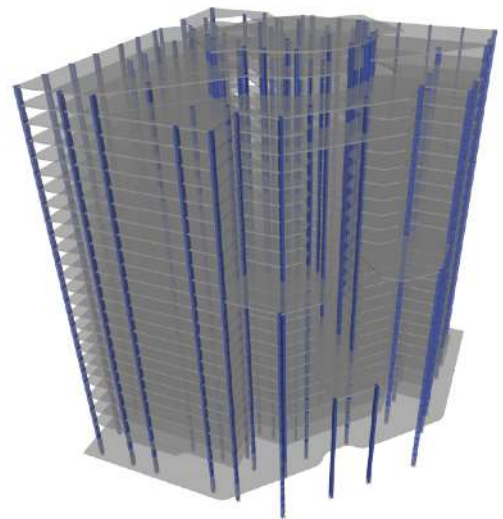
Cont.

Khartoum, Sudan

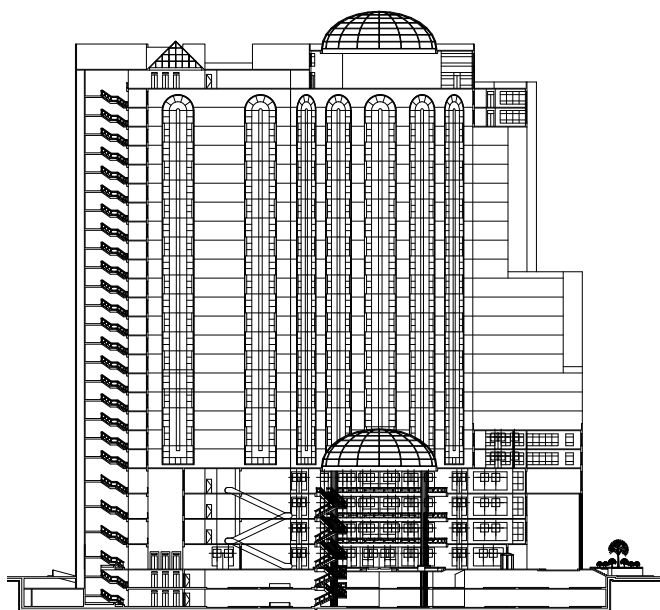


Architectural Mass Model

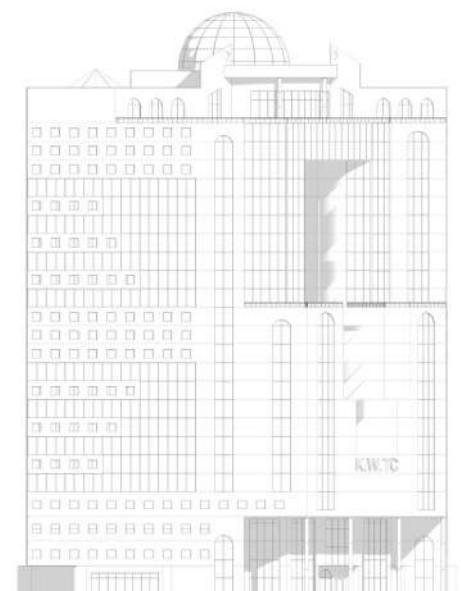
- Offices
- Hotel Apartments
- Business Center & Health Club
- Retail



Views of Etabs Model



Section



Elevation

A photograph of a modern glass skyscraper with a courtyard. A tree is visible on the left, and a paved area with a metal pole is in the foreground. A semi-transparent white box contains text.

At IHCG, We develop and influence our design based on foresight, sharing ideas, and listening, to help reach significant new ideas to life and engage clients and stakeholders in meaningful conversations about change.



since 1988
ihcg-corp.com

EL WAKEEL TOWER MIXED-USE

Khartoum, Sudan

Client

Ministry of Interior

Services

Architectural,
Structural, MEP,
Interior Design

Stages

Conceptual Design
Preliminary Design
Detailed Design
Tender Documents



El Wakeel Tower Mixed-Use located in Khartoum, in a plot area of 1,600 sq.m, and foot print of 1,160 sq.m, and built-up area of 17,570 sq.m, in 14 floors. The building comprise Retail Spaces in the 1st 2 Floors, and office spaces.

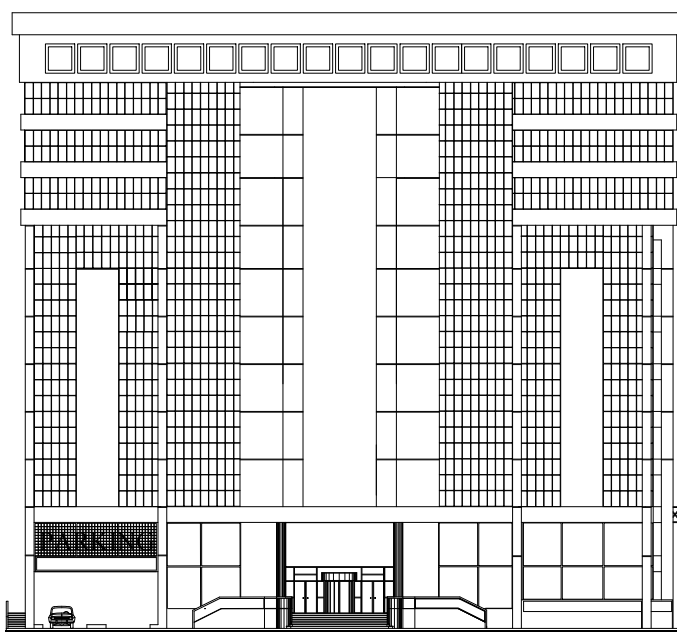




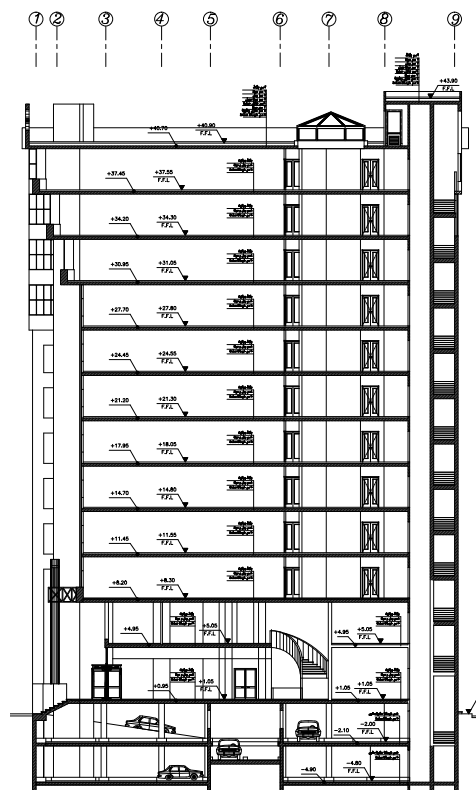
Ground Floor

● Retail
● Restaurant

● Services
○ Circulation



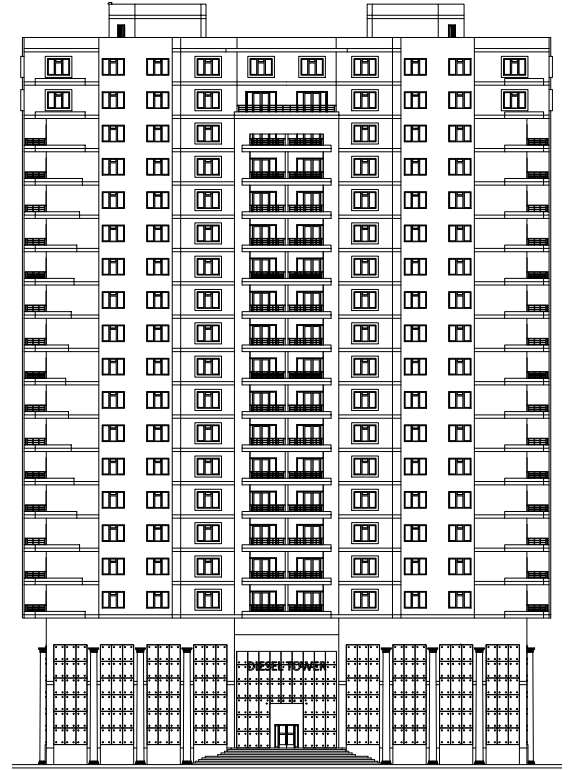
Elevation



Section

DIESEL TOWER RESIDENTIAL APARTMENTS

Khartoum, Sudan



Client

Diesel Co.

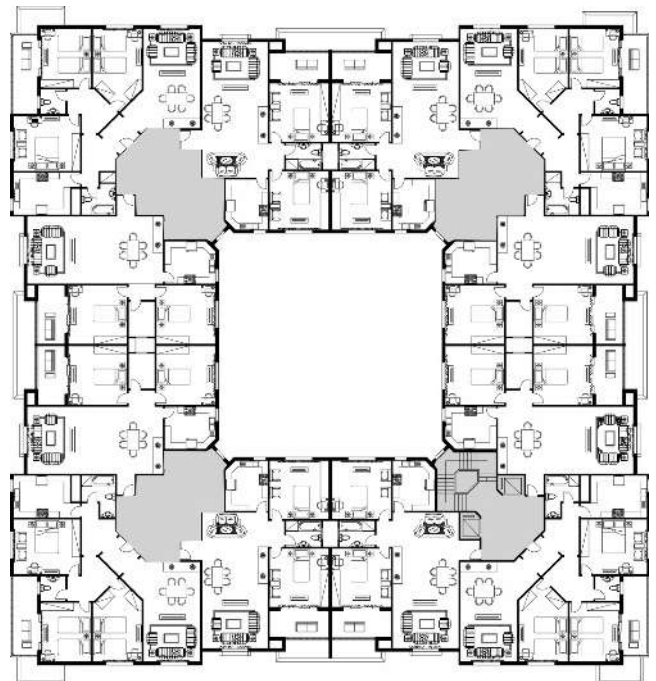
Services

Architectural
Structural, MEP
Interior Design

Stages

Conceptual Design
Preliminary Design
Detailed Design

Diesel Tower Residential Apartments, located in Khartoum, Sudan, in a plot area of 2,500 sq.m, foot print of 1,860 sq.m, and built-up area of 39,600 sq.m, in 20 floors. The building comprise, 3 basements parking floors, and 17 residential floors contains 114 residential apartments, and 2 penthouses.



POLICE TOWER RESIDENTIAL APARTMENTS

Khartoum, Sudan



Client

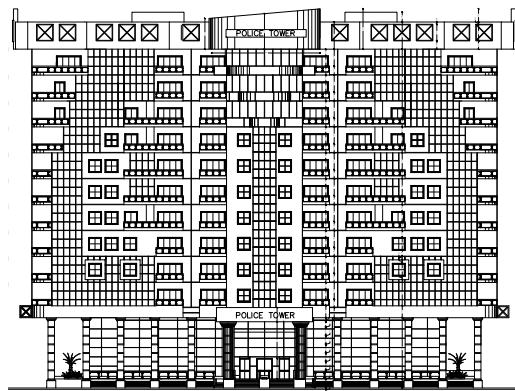
Ministry of
Interior

Services

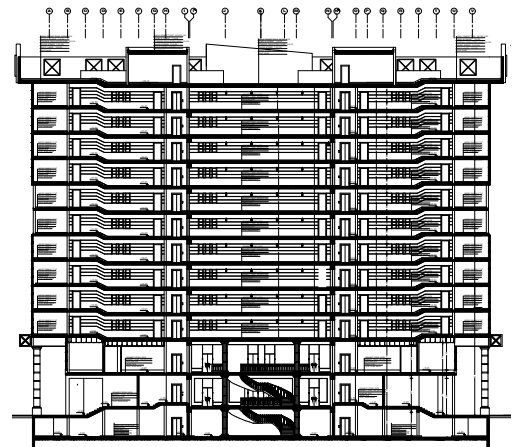
Architectural
Structural, MEP
Interior Design

Stages

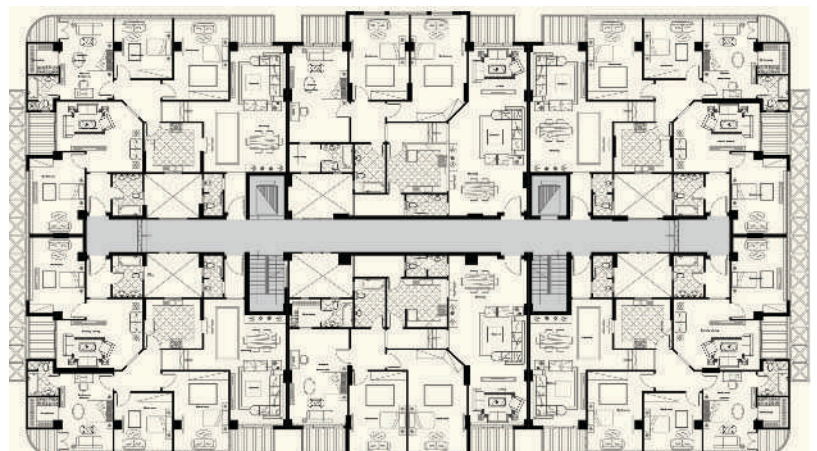
Conceptual
Design
Preliminary
Design
Detailed Design



Elevation



Section



Typical Floor

Police Tower Residential Apartments, located in Khartoum, in a plot area of 2,020 sq.m, and foot print of 1,220 sq.m, and built-up area of 16,660 sq.m, in 13 floors. The building comprises Basement parking floor, Ground floor, Mezzanine, and 10 residential floors, accommodates 50 residential apartments.



“Is committed to the quality of every step of the way, driving innovation to achieve the timely, efficient, and cost-effective delivery of programs.”

Cairo Office - Head Office

28 Abd El Azeim El Gholamy St.,
Nasr City, Cairo, Egypt
Tel.: (+202) 2349 6892/ 6686
Fax: (+202) 2349 6847

Khartoum Office

Nile St., Kuwaitian Tower 2, Floor 2,
Khartoum, Sudan
Tel.: (+249) 1551 54580 – 1549 11944
Fax: (+249) 1837 93687
Mobile: (+249) 91 237 4297

Al Kuwait Office

P.O. Box: 21501 Safat, Code No. 13067 – Kuwait
Tel.: (+965) 2262 9054
Fax: (+965) 2262 9043
Mobile: (+965) 66 666 332

Algiers Office - Sidar Consult

142, Haï El Bina, Dely Brahim, Alger, Algeria
Tel.: (+213) (0) 2191 0191
Fax: (+213) (0) 2191 0190

Contacts

For New Business

Abdelaal Elhayawan
(+20) 100 777 1110
abdelaal@ihcg-corp.com

For Projects

Ayman Elhayawan
(+20) 100 444 4401
ayman@ihcg-corp.com

ISO 9001:2008
ISO 14001:2004
OHSAS 18001:2007

url: www.ihcg-corp.com
email: info@ihcg-corp.com