



A DESIGN CONSULTANCY GROUP

A SNEAK PEEK

V.06

A private consultancy firm of designers, planners, engineers, consultants, strategists and technical specialists offering a broad range of professional end-to-end and integrated engineering services. Through our work, we aim to make a positive difference to different communities.

**WE SHAPE A BETTER WORLD.**

Founded in 1988 with an initial focus on HVAC engineering, IHCG first came to the world's attention with the redesign of the Hot Water System at Sofitel El Gezira on 1991. IHCG has since grown into a multi-disciplinary organisation. Its work, such as the Kempinski Royal Maxim Hotel on 2011 located in Cairo. We develop and influence our design based on foresight, sharing ideas, and listening, to help reach significant new ideas to life and engage clients and stakeholders in meaningful conversations about change.

## Contacts

Abdelaal Elhayawan, VP, Strategy and Business Planning  
[abdelaal@ihcg-corp.com](mailto:abdelaal@ihcg-corp.com)

Ayman Elhayawan, VP, Projects Manager  
[ayman@ihcg-corp.com](mailto:ayman@ihcg-corp.com)





“ Our beliefs based on creating and inspiring the teamwork environment. Combining our knowledge, talent, and experience, will definitely value our work.”



# Contents

---



06

Chairman's Word

08

About IHCG

Read our Minds  
Company Location  
Team values

10

About IHCG

IHCG Timeline

12

Organization Chart

Executive Profiles

16

IHCG Service

Sustainability  
Project Management

20

Market Sectors

Urban Design, Infrastructure,  
Transportation Engineering,  
Buildings, Healthcare, Oil & Gas,  
Industrial & Power

36

Projects Samples

## Mission

We integrate most of engineering and architecture disciplines at one place to deliver exceptional design ideas and solutions with competitive prices, and to help make any project pass with ease, for our Clients in the public and private sectors. The science of engineering and sustainable design, together with construction management and supervision services gives our Clients better future for their projects.

## Vision

We see each client as an added value, and every employee as an asset. Our strategy is to be always developed offering latest technology through comprehensive and integrated multidisciplinary services to add values to our Clients. We always have the desire to be one of the top engineering and architecture firms in the MEA Region.



A DESIGN CONSULTANCY GROUP





## Chairman's Word

*"On 1988, I planed & decided to take the challenge and establish engineering consultancy firm. It passed through deeply and long thinking because my objective was not to establish a repeated traditional firm but to be a completely different with new taste of engineering design.*


*To achieve this target I defined the factors that can drive the firm to its success:*

- 1- The firm strategy must be how to create Trust and Honesty to build beneficial sustainable long term relationships with our clients;*
- 2- To make the firm Strong & Stable by applying the concept of employee ownership;*
- 3- Our professionals must be creative, award-winning, environmentally and socially conscious, and keenly aware of our clients needs.*

*Since the date stated above, the born of IHCG, our performance was exciting, dynamic and innovative, and our policy was how to always add values to our workforce by welcoming new talent and experienced professionals with the same enthusiasm. Performing innovative, client oriented, high quality and sustainable work lead us to achieve what we were thinking of."*

Ibrahim Elhayawan  
IHCG Chairman

*Ibrahim EL Hayawan*



More than

**500** Projects

EGYPT, SUDAN, ALGERIA,  
LIBYA, JORDAN, KUWAIT,  
FRANCE

More than

**3** ISO  
Certifications

9001 - 14001 - 18001

More than

**65** Professionals  
& Experts

in Design & Construction

**5**

Office Branches

Cairo, Khartoum, Alger,  
Tripoli, Al Kuwait



# Read Our Minds

We are an Egyptian Professional Engineering Consultancy Firm. In business since 1988. We have 5 offices in the region. Our scope of work covers from design to Construction Supervision, in different engineering sectors; Urban & Master Planning, Infrastructure, Transportation, Buildings, Oil & Gas, and Industrial & Power. Our Team Comprises more than 65 professionals and experts, who accomplished more than 500 Projects in Egypt, Sudan, Libya, Saudi Arabia, UAE, Jordan, Kuwait and France.

## OUR GOALS

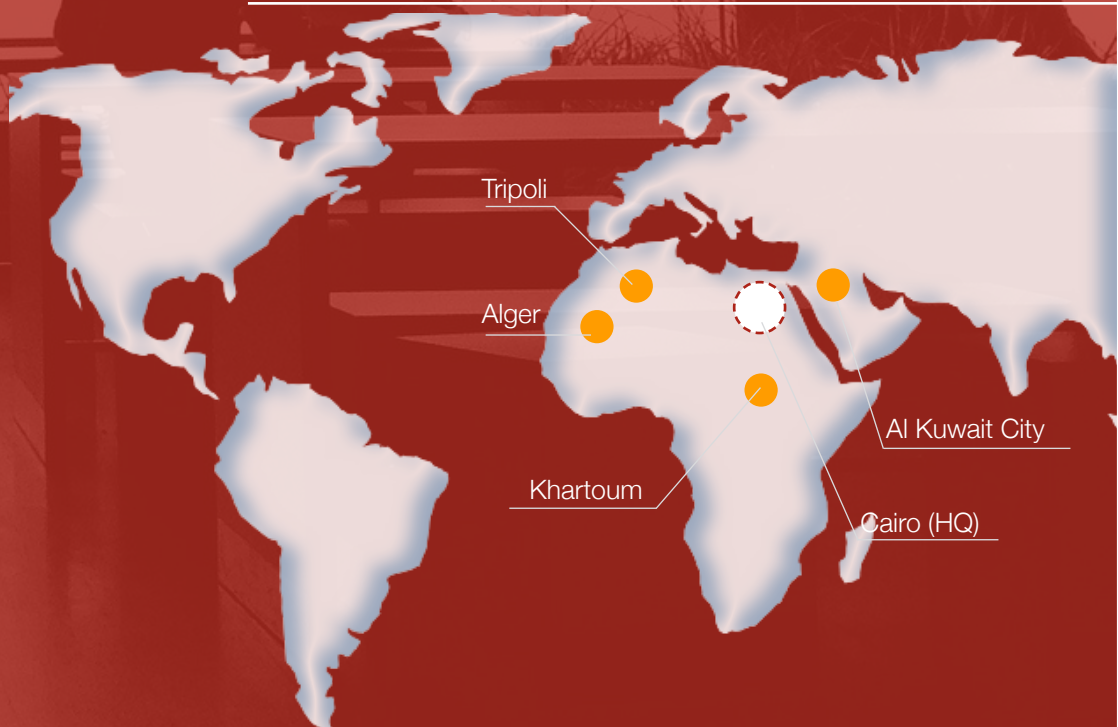
Listen

Focus

Work

Reach

## Our Offices



## OUR TEAM'S VALUES

Ethics & Quality

Mutual Respect

Commitment

Client Satisfaction

Team Work

Honesty & Trust

## IHCG Timeline started with

1988

Founding IHCG  
with HVAC and  
Electrical services

1990-91

- 1st project in Saudi Arabia. The Extension of Oberoi El Madena Hotel.
- IHCG called among int. firms to solve the Hot Water System problems of Sofitel El Gezira Hotel, Cairo

2006

Provide Infrastructure  
design works for  
Misurata City, 50  
Million sq.m, in Libya,  
with Atkins UK

2005

- Urban Planning of Um Barouna Coastal City, 1.8 Million sq.m, Sudan.
- Design the MEP and ID of Al Quds Mixed-Use in Alger, Algeria

2009

Awarded the international  
competition of the Urban  
Planning of Zeralda City.  
1.9 Million sq.m

2011

IHCG design the MEP of  
Kempinski Royal Maxim  
Hotel, One of the luxurious  
5-Stars Hotel in Cairo

2017

1st project with the EU Delegation,  
in association with PLANET S.A,  
Greece. Providing the Monitoring of  
infrastructure rehabilitation works of  
79 Technical Secondary Schools for  
the Egyptian Ministry of Education

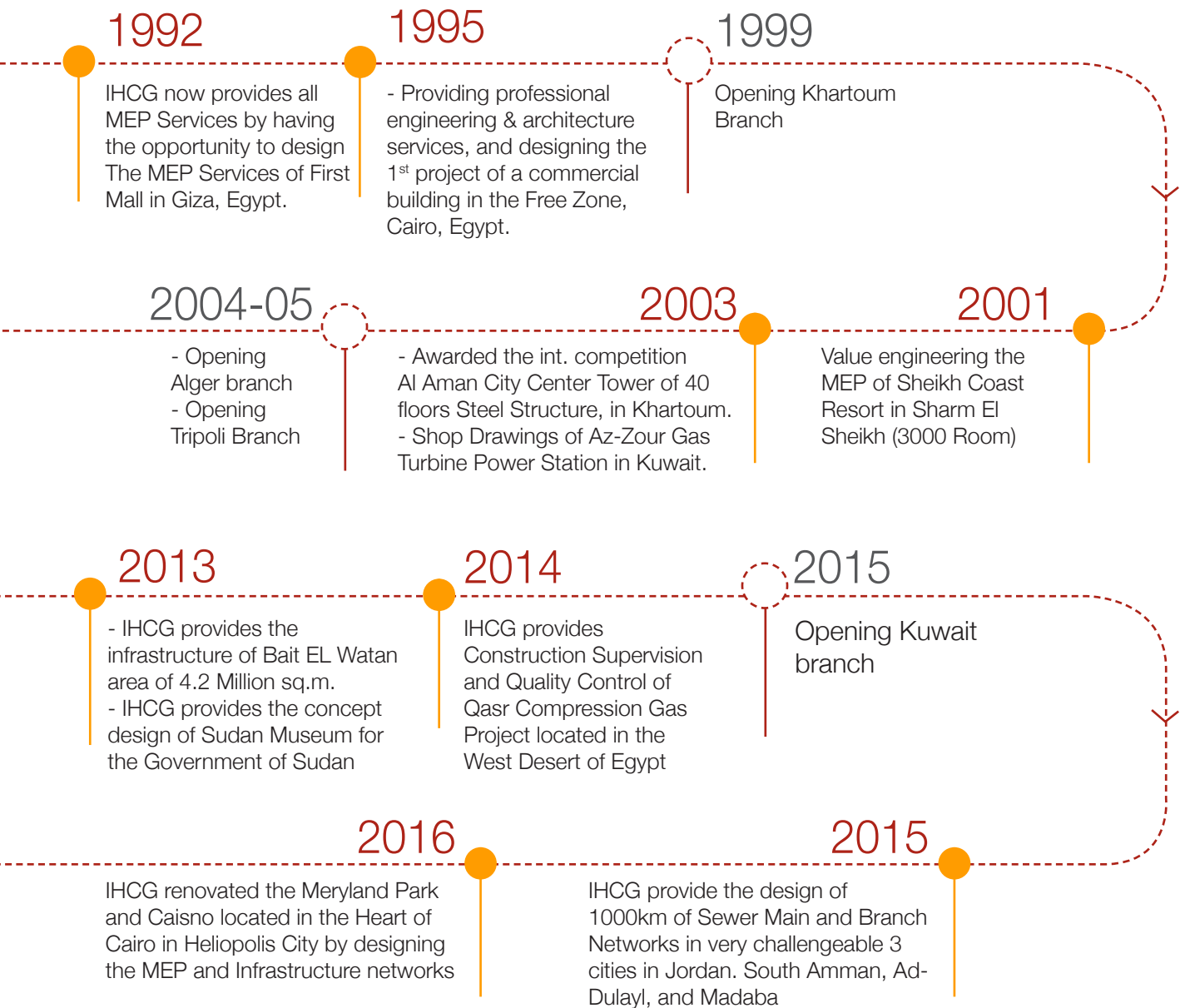
2018

IHCG provides the  
complete design of a  
general hospital. The  
Egyptian German  
Hospital, 120 bed,  
and located in Giza,  
Egypt

2019

IHCG returned to the Saudi  
Market by providing the Study  
& Design of 2 roads. The  
Enhancement and Development  
of Al Riyadh Road, and The  
development of Al Emaam Ali  
Road. Each road is 15km, and  
they are both located in Al Qatif,  
Saudi Arabia





& still more to go

Doing professional work = winning great business





“We know how to listen and understand our clients personality, to create memorable and meaningful spaces that support operational objectives, create value and improve quality of life.”



## ORGANIZATION CHART

Chairman & CEO  
Ibrahim Elhayawan

CFO  
Abdallah Kenawy, VP

Human Resources  
Rasha Elhayawan, VP

Contracts Administrator  
Mohamed Ezzat

Office Manager  
Emad Seddiek

Legal  
Ashraf EL-Banna

IT and Software Developer  
Hossam Ibrahim

Construction Services  
Atef Elhady, VP

Projects Management  
Design Services  
Ayman Elhayawan, VP

Design Services

Strategy & Business  
Planning  
Abdelaal Elhayawan, VP

Procurement and  
Tender Services  
Rasha Shedid

Architecture  
Magdy Nazeef, VP

Structure  
Yehia Ezz EL-Din, VP

Infrastructure  
Tarek Sabry, VP

MEP  
Mohamed Aziz, VP

Oil & Gas  
Mohamed Tantawy, VP

## EXECUTIVE PROFILES



**Ibrahim  
Elhayawan**  
(B.Sc Mechanical)  
C.E. Mechanical  
CEO



**Abdallah Kenawy**  
Vice President  
(B.Sc of Commerce),  
MBA  
CFO



**Abdelaal  
Elhayawan**  
Vice President  
Corporate Strategy &  
Business Planning  
(B.Sc  
Telecommunication)  
MBA



**Mohamed M.  
Nazeef**  
Vice President  
Director of  
Architectural Division  
(B.Sc Architecture)  
C.E. Architecture



**Yehia Y. Ezz EL-  
Din**  
Vice President  
Design Principal  
Concrete & Steel  
Structure  
Marine & Offshore  
(B.Sc Civil) - Expert



**Tarek I. Sabry**  
Vice President  
Civil, Infrastructure  
Director of  
Infrastructure Division  
(B.Sc Civil)  
Ph.D Public Works



**Mohamed R.  
Tantawy**  
Vice President  
Design Principal  
Oil & Gas  
(B.Sc Chemical)



**Mohamed Aziz**  
Vice President  
Director of MEP  
Division  
(B.Sc Mechanical)  
C.E. Mechanical



**Mohamed  
El Turkey**  
Design Principal  
Concrete &  
Steel Structure  
(B.Sc Civil)  
(MS.c Structural)



**Ayman  
Elhayawan**  
Vice President  
Projects Department  
Head  
Design Services  
(B.Sc Architecture)



**Tamer Fawzy**  
Projects Manager  
Construction  
Services (B.Sc Civil),  
MBA, PMP



**Rasha Elhayawan**  
Vice President  
HR Manager  
(B.Sc of Law)



**Ismail Ali**  
Vice President  
Branch Manager  
Kuwait  
(B.Sc Electrical)



**Hassan Salah**  
Vice President  
Branch Manager  
Sudan  
(B.Sc Civil), MS.c  
Civil



**Hossam Hamdi**  
Design Principal  
Electrical,  
MEP Division  
(B.Sc Electrical)  
C.E. Electrical





---

**Hamdy Saad**  
Design Principal  
Telecommunication,  
MEP Division  
(B.Sc  
Telecommunication)  
C.E. Electrical

---



---

**Magda Ibrahim**  
Design Principal  
HVAC,  
MEP Division  
(B.Sc Mechanical)  
C.E. Mechanical

---



---

**Mohamed H. Aly**  
Design Principal  
Mechanical,  
MEP Division  
(B.Sc Mechanical)  
MS.c Mechanical

---



---

**Ibrahim Mahfouz**  
Healthcare Planning  
Principal  
Architectural Division  
(B.Sc Architecture)  
PRMG

---



---

**Ahmed Elsherif**  
Design Principal  
Biomedical  
Equipment  
Architectural Division  
(B.Sc Electrical)  
C.E. Electrical

---



---

**Mohamed  
Ramadan**  
Design Principal  
General Buildings  
Architectural Division  
(B.Sc Architecture)  
C.E. Architecture  
LEED AP BD+C

---



---

**Mona Khafagy**  
Design Principal  
Roads and Airports  
Department Head  
Infrastructure Division  
(B.Sc Civil), PE  
MS.c Highways &  
Airports

---



---

**Omar Moussa**  
Design Principal  
Bridges  
Infrastructure Division  
(B.Sc Civil), PEng  
Ph.D Bridges  
Construction

---



---

**Mohamed Khairy**  
Design Principal  
Power Generation  
& Transmission Line  
Department Head  
Infrastructure Division  
(B.Sc Civil)

---

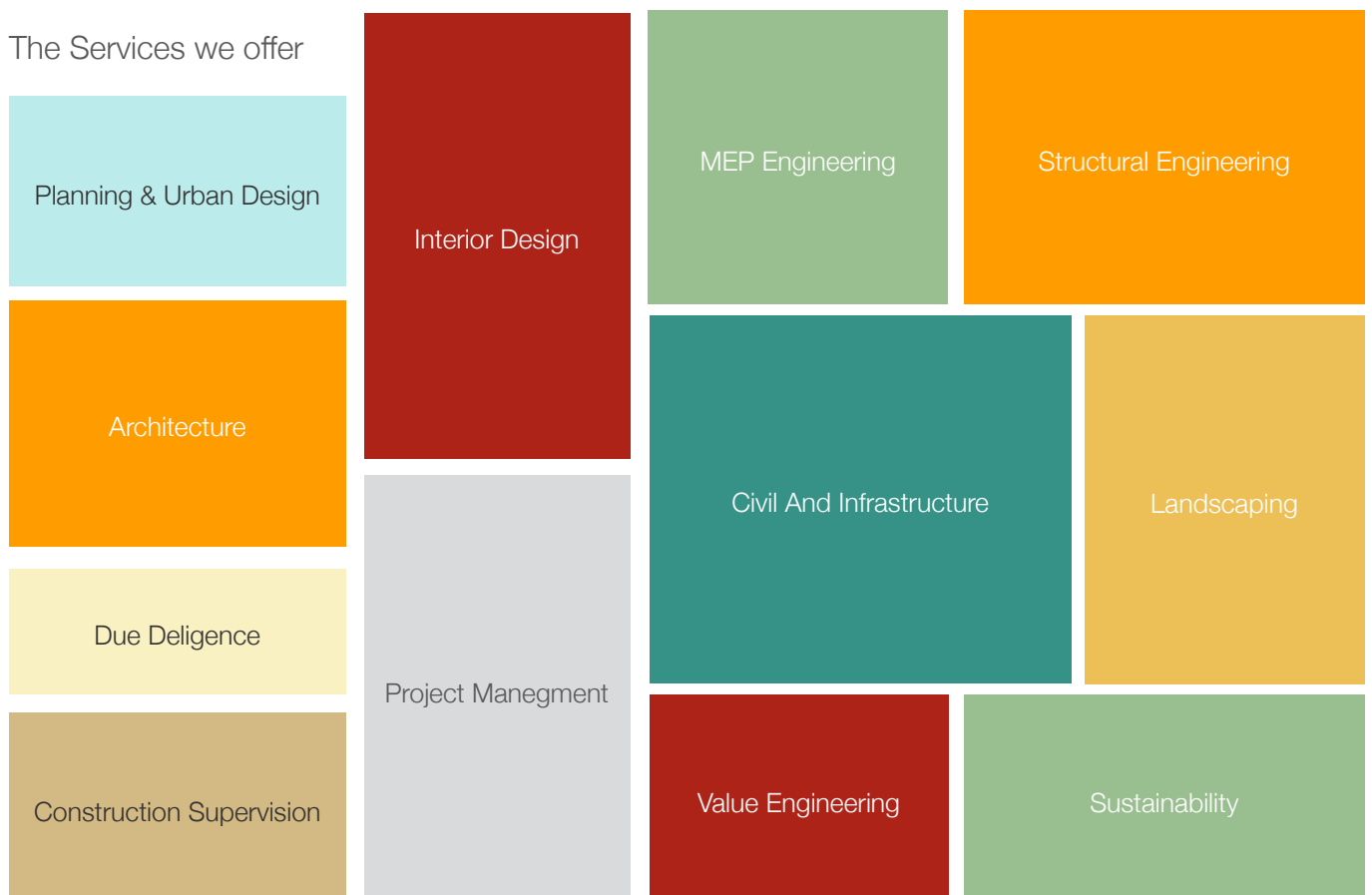


## FIELDS OF SPECIALIZATION

At IHCG we offer end-to-end integrated and professional engineering services. We believe that investing in our resources and total responsibility for what we offer will enhance our capabilities and ripen our services. Our competences allow us to connect with one another, involving our experts at every major and minor level, also include our clients' visions to reach a target that satisfies all entities.

Thanks to our clients and their cooperation, we were given the chance to provide them with our integrated, high value, and sustainable solutions. We are proud to offer these integrated multidisciplinary services for most of the engineering fields, throughout all project phases starting from studying, planning and design, till the final steps of reporting and delivering the project to the construction phase.

### The Services we offer







## Project Management

Our challenge is how to pass every project with ease, coordinated, and seamlessly integrated from day one and within design quality.

IHCG experts provide comprehensive and integrated engineering services, and all comes at one place. And to make sure of our services delivery on time and within design quality and budget, IHCG understands that project management shall be handled in a professional way to be able to achieve our clients vision.

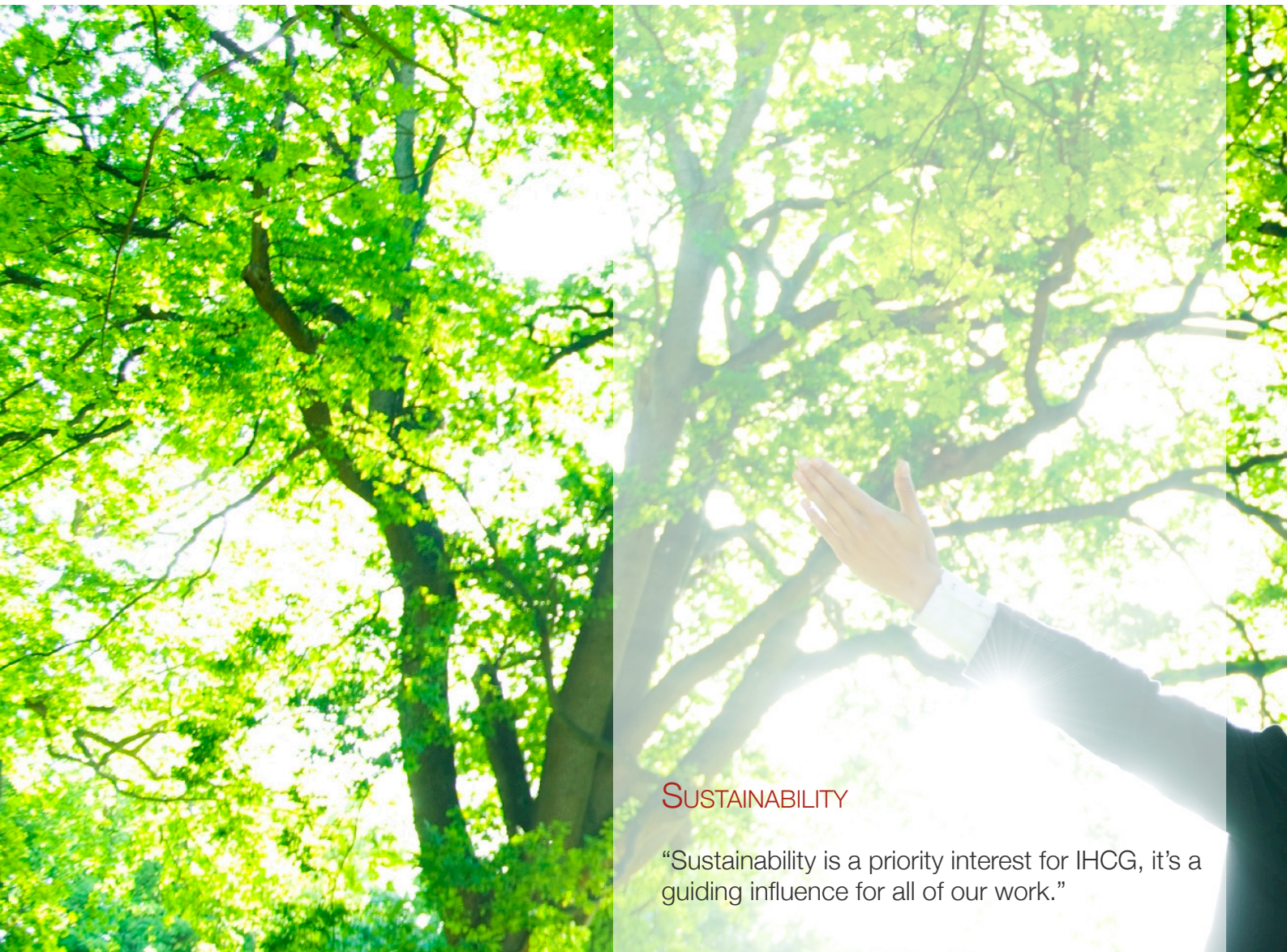
## PROJECT QUALITY OF SERVICES (QoS)

At IHCG, to maintain a high quality for our projects, we use a specific project execution plan that help pass any project component with ease throughout the Project Life Cycle. All Project Components must pass through the Project Initiation, Planning, Execution, Monitoring & Controlling, and Closing steps, so we can ensure the project requirements and standards for our clients.

Setting a clear project execution plan, timeline, and setting communication system between all project stakeholders, helps the execution of all project submissions within quality requirements, approved timeline and within budget.







## SUSTAINABILITY

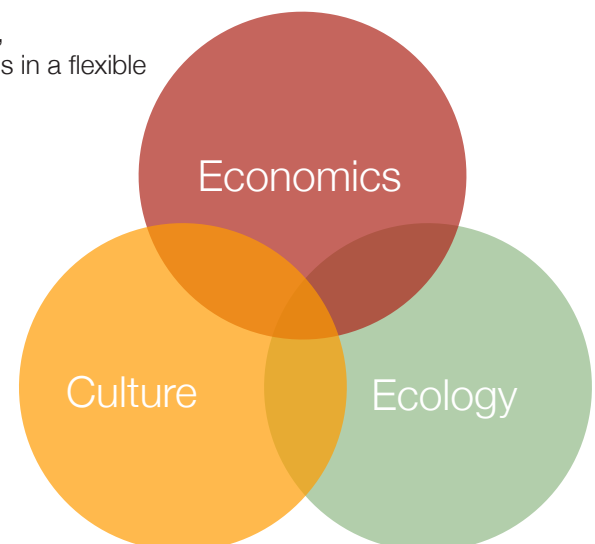
“Sustainability is a priority interest for IHCG, it’s a guiding influence for all of our work.”

### Our Philosophy of Sustainability

IHCG design approach is moving towards sustainability. It is a social challenge that entails urban planning and transport, local and individual lifestyles and ethical consumerism.

it highlights the property of biological systems to remain diverse and productive indefinitely. Sustainability can take many forms from reorganizing living conditions like;

- sustainable cities, reappraising economic sectors (green building, sustainable agriculture),
- work practices (sustainable architecture) using green technologies,
- renewable energy and sustainable fusion power, designing systems in a flexible and reversible manner,
- adjusting individual lifestyles that conserve natural resources.







## Our Responsibility

We at IHCG uses sustainable development, which includes the three interconnected aspects: ecology, economics, and culture.

At IHCG, we are responsible to address the operational and occupant issues to help develop strategies for reducing costs for our clients while minimizing their environmental impact. We also design high-performance, and sustainable spaces.

Our design approach not merely an attitude of how we can design and create a state-of-the-art project, but how can we inspire and motivate our thoughts to a project with a long-lasting architecture, reduce energy and natural resources.

At IHCG, we understand that sustainable design plays a powerful role in conserving these resources while achieving energy independence, reducing greenhouse gas emissions, and effectively improving our client's bottom line.





## OUR MARKET SECTORS

### Urban Design

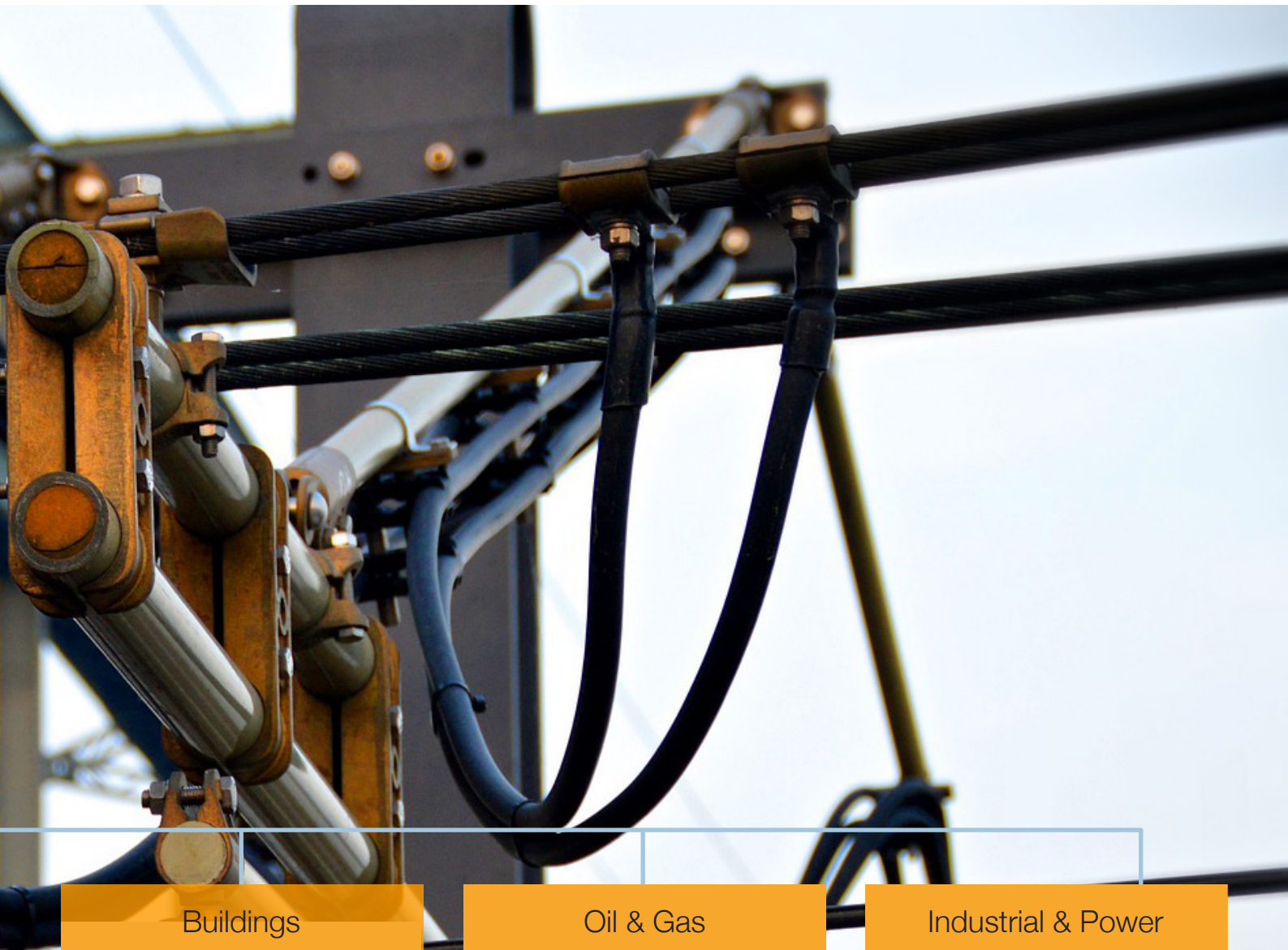
- City Design
- Master Planning
- Landscape Design

### Infrastructure

- Water & wastewater
- Sewerage
- Irrigation
- Fire Fighting
- Electrical
- Telecommunication

### Transportation

- Intelligent Transportation Systems (ITS)
- Roads & Highways
- Transport planning
- Pavement Assessment
- Infrastructure
- Bridges and Civil Structures
- Airports



### Buildings

- Healthcare Facilities
- Hospitality
- Commercial
- Retail
- Mixed-Use
- Education
- Recreational
- Residential
- Banks

### Oil & Gas

- Piping
- Chemical Terminals
- Petroleum Stations
- Gas Pressure Stations

### Industrial & Power

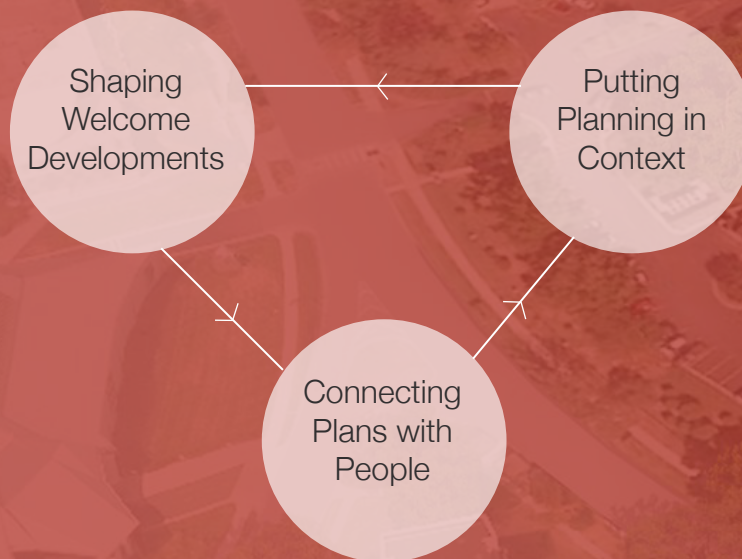
- Warehouses
- Factories
- Power Stations
- Transmission Lines



# Planning & Urban Design

City Design, Master Planning, Landscape Design

## Projects Philosophy



## Projects samples

- The Museum (Sudan Historical City), Khartoum, Sudan
- Zeralda Touristic Village, 1.9 Million sq.m, Algeria
- Um Barouna City, 1.8 Million sq.m, Sudan
- Tabarak Residential Compound, New Cairo, Egypt
- Council of Ministries Residential Compound, New Cairo, Egypt





“We make projects happen by steering proposals along the complex route to consent and completion”



# Infrastructure

Water & wastewater, Sewage, Irrigation, Fire Fighting, Electrical, Telecommunication

## Field of Services

IHCG provides all facets of civil and MEP infrastructure, including water supply and sanitation networks, electrical, telecommunication networks, transportation and Environmental Engineering. IHCG expert team in infrastructure engineering of designing numerous projects, is at the forefront of planning and designing the entire infrastructure projects of any size.

## Projects samples

- Main & Branch Sewer Networks, and Household Connections in South Amman, Ad-Dulayl, and Madaba, Jordan, 1000km
- King Salman 3 Universities in 3 cities (El Tur, Sharm Elsheikh, and Ras Sedr), with total land area of 1.3 million m<sup>2</sup>, Egypt
- Continental Residence Compound, Shek Zaied City, 6th of October, Egypt
- Bait EL Watan City Infrastructure, 420 Hectare, Cairo Egypt
- Borg El Arab Airport, Egyptian Company for Airports, Alexandria, Egypt
- Dreamland City, North-East, Cairo, Egypt
- Telephone Networks, capacity 10,000 tel. lines, Qena Governorate, Tiba City, Egypt







# Transportation

Intelligent Transportation Systems (ITS), Roads & Highways, Transport planning, Pavement Assessment, Infrastructure, Bridges and Civil Structures, and Airports

## Field of Services

### Intelligent Transportation Systems (ITS)

Construction Engineering & Constructability

Technical Concepts & Modeling

Impact of Traffic

### Pavement Assessment

Visual Condition Surveys

Non-Destructive Testing

Destructive Testing

### Airports

Airfield Design Expertise

Landside Development Specialists

## Projects samples

- Study & Design of the Enhancement and Development of Al Riyadh Road, 15km, Al Qatif, Saudi Arabia
- Study & Design of the Development of Al Emaam Ali Road, 15km, Al Qatif, Saudi Arabia
- 75km Internal Roads Network for Bait EL Watan, New Cairo, Egypt





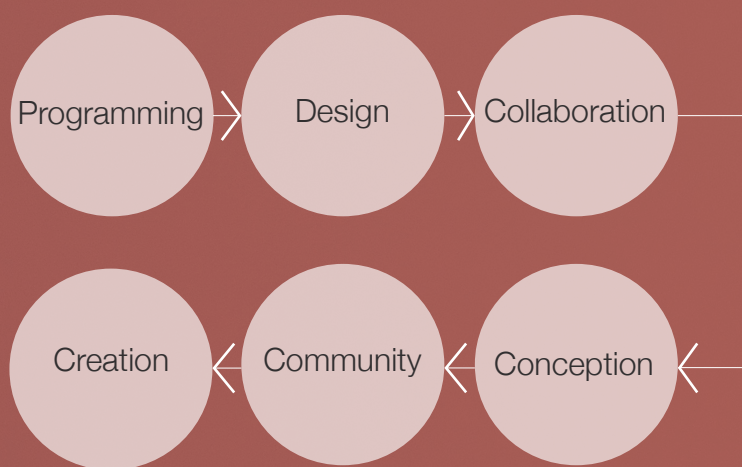
"Together, we work to improve mobility, enhance communities and economic vitality."



# Buildings

Hotels & Resorts, Commercial, Retail, Mixed-Use,  
Healthcare, Education, Recreational, Residential,  
Banks


## Projects Phasing



## Projects Samples

- Kempinski Royal Maxim Hotel, 5 Stars, New Cairo, Egypt
- Al Amaan City Centre, Khartoum, Sudan
- Maryland Park & Casino, Cairo, Egypt
- City Complex, Khartoum, Sudan
- Al Quds Building, Alger, Algeria
- Nile Grand Plaza, Khartoum, Sudan
- Wahran Complex, Wahran, Algeria
- Wahat Al Khartoum, Khartoum, Sudan
- Maxim Mall, New Cairo, Egypt
- National Gene Bank, Cairo, Egypt





We believe that the most successful, full-bodied design solutions arise from a collaborative process that begins with a holistic approach to problem-seeking

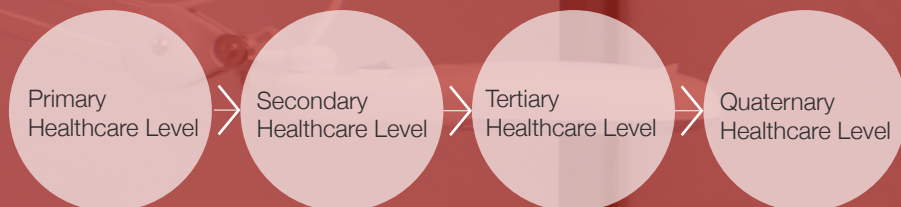


# Healthcare Facilities

Healthcare Planning, Healthcare Architecture, Bio Medical Engineering, Structure \ MEP Engineering

## Field of Services

Engineering consultancy services for healthcare facilities among the four international healthcare levels



## Projects samples

- The Egyptian German Hospital, 120 Bed, Giza, Egypt
- Um Dorman Hospital, 200 Bed, Um Dorman, Sudan
- Al Obayed Hospital, 200 Bed, Al Obayed, Sudan
- Medical Tower, Khartoum, Sudan
- Medical Complex, Khartoum, Sudan
- EL-Hady Charity Hospital, 220 Bed, East Cairo, Egypt





We understand the nature, requirements & rapidly developing technologies of the healthcare facilities; our experts collaborate with clients and stakeholders to conquer the challenges to bring a healthcare facility design that enhances health outcomes & raises satisfaction levels.

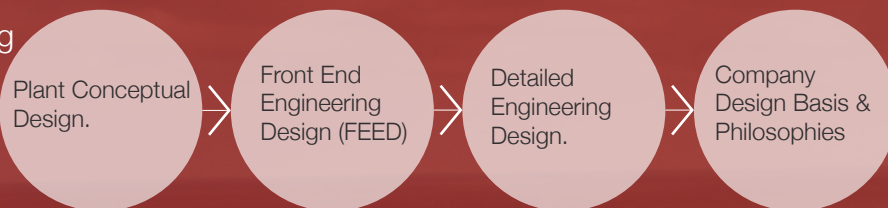


# Oil & Gas

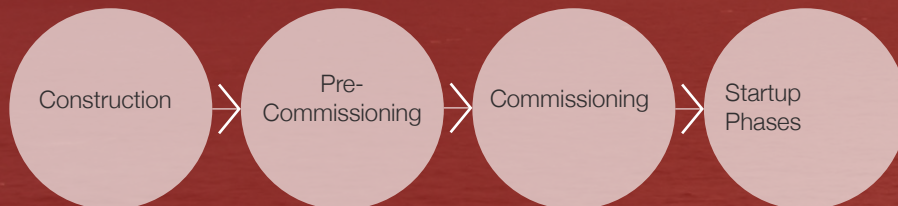
Piping, Chemical Terminals, Petroleum Stations, Gas Pressure Stations

## Field of Services

### Mid-Stream Engineering



### Construction Supervision & Commissioning



### HAZOP & HAZID Studies



### Projects samples

- Gas Pressure Reduction and Odor Removal Station, Sinai Gas, Qantara, Ismailia, Egypt
- OiLibya Gas Station Alexandria-Cairo Road, Egypt
- Sharofeil Factory for Liquefied Petroleum Gas (LPG), Sharkia State, Egypt
- Extension of Alex Chemical Terminal (Alxct) - Phase 2, Water Hammer Analysis for Fire Fighting Pipe Network, Alexandria, Egypt







# Industrial & Power

Warehouses, Factories, Power Stations,  
and Transmission Lines

## Field of Services

Industrial Plants and Manufacturing facilities are becoming more complex. We listen carefully to our clients from the beginning to understand and address their needs as early as possible to reach the most efficient and economical solution with ease.

Power provision is a key element of infrastructure services, and it forms the basis factor of developments. At IHCG, we provide all engineering services for power stations, sub-stations, and transmission lines.

## PROJECTS SAMPLES

- Renovation and Strengthen the Roof of the Transport Workshop, Giza, Egypt
- Oriental Weavers Factories, 10th of Ramadan, Egypt
- Zahratex Factory for Textile, EL Oboor City, Egypt
- Az-Zour Gaz Turbine Power Station, 1000 Mega, Kuwait
- Hoechst Marion Roussel Factory, Cairo, Egypt
- Nichle Chrome Components Factory, 10th of Ramadan City, Egypt, Egypt
- Al Ezz Melt Shop Plant, Sadat City, Egypt
- Al Ezz Steel Rolling Mill Factories No.1 & 2, Sadat City, Egypt






We integrate most of engineering services at one place of civil and structural, MEP, sustainable engineering to deliver comprehensive and integrated design solutions which are economically, environmentally and strategically beneficial to our clients.





# Projects Samples





IHCG designs environments to enhance how people live, work and thrive. In our work, we focus on where people gather and the spaces they share. We provide design services for private developers, landowners, public agencies, institutions, universities and healthcare centers to help make decisions about long-term needs and achieve targeted goals.





## 1 The Egyptian German Hospital - 120 Bed

### Client

Al-Hammd Company for Medical & Environmental Services

### Project Location

Giza Egypt

### Services

Medical Planning  
Medical Equipment Planning  
Architectural  
Interior Design  
Structural  
MEP  
Construction Supervision

### Studies

Geotechnical Investigation  
Topographic Surveys

## 2 National Al-Rebat University Campus

### Client

Ministry of Interior

### Project Location

Khartoum, Sudan

### Services

Master Planning  
Architectural





# Zeralda Touristic Village

1.9 M  
sq.m

## Client

Sidar Co.

## Project Location

Zeralda, Algeria

## Services

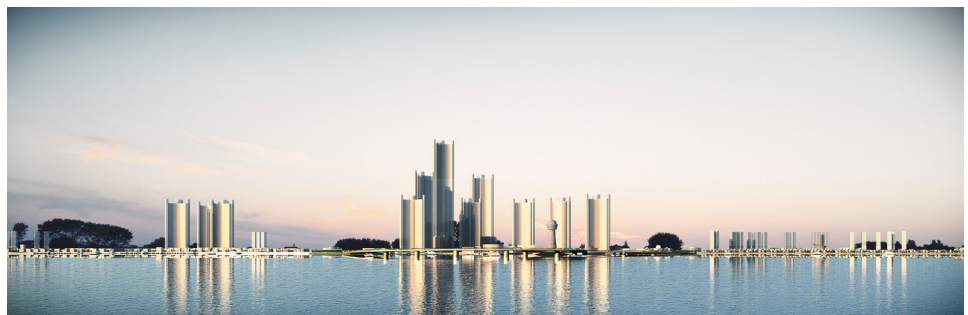
Planning and Studies

Urban Planning

Master Planning

## Project Contents

- Luxury Villas
- Semi-Detached Villas
- Semi-Detached Luxury Villas
- Mixed-Use Luxury Towers
- Hotels
- Residential Towers
- Residential Buildings
- Tennis Courts
- Open Air Theater
- Sport Club
- Mall & Pavilions
- Services



Zeralda Touristic Village located at the northern side of Algeria, faces the Mediterranean-Sea. It has a land area of 1.9 million sq.m, and features a marina, and flying bridge.





3000  
Prayer



## 1 Al-Azozab Mosque

### Client

Confidential

### Project Location

Al-Azozab Village, Khartoum,  
Sudan

### Services

Architectural  
Structural  
MEP  
Interior Design

## 2 OiLibya – Kom Osheem Gas Station

### Client

Oilibya Misr Co.

### Project Location

Kom Osheem, Egypt

### Services

Civil Works  
Architectural  
Structural  
MEP





### 3 City Complex

#### Client

Ministry of Interior

#### Project Location

Khartoum, Sudan

#### Services

Master Planning  
Architectural, Structural, MEP,  
Interior Design  
Landscape



### 4 Gas Pressure Reduction Stations

#### Client

Many Clients

#### Project Location

Various locations around Egypt

#### Services

Civil Works  
MEP  
Architecture  
Construction Supervision



Panorama of History  
& Universe in Sudan

# Sudan Museum

## Client

Sudan Government

## Project Location

Khartoum, Sudan

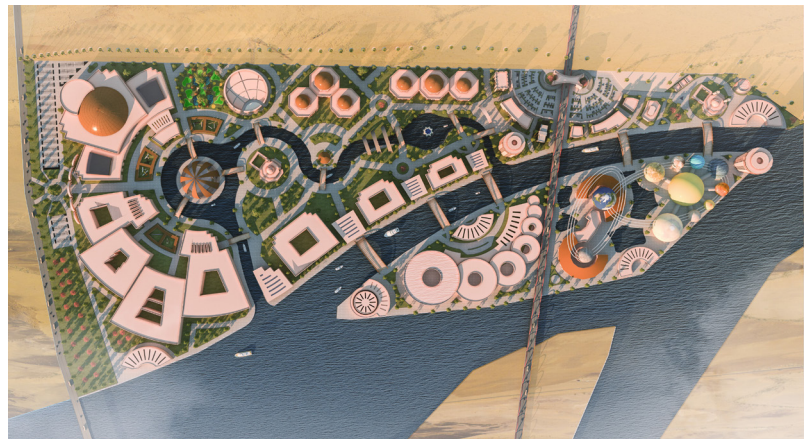
## Services

Planning and Studies

Master Planning

The Architecture Design of The Museum is considered to have a new design taste. The idea of the Museum came by IHCG, helping Sudan for development. IHCG provide land selection, studies of project components, Urban and Master Planning.

A giant historic city on 2 million sq.m, gathering in one place various museums telling the story of the origin of the universe & relating it to the development of ancient human civilizations over thousands of years BC, all the way into the modern era encompassing all elements required to establish a civilized society. It also includes varieties of museums like Earth, Human, Plants, and Effects Museum, etc. It will cover all elements that serve the community.



## Project Contents

- Different Museums from Different Eras
- Different Gardens (Animals - Marine Organisms - Plants)
- Hotels
- Health Centers
- Commercial Markets
- Mosques
- Open Air Halls
- Conference Halls
- River Stations
- Industrial Rivers
- Residential Area
- Different Restaurants
- Airport





## 1 Kempinski Royal Maxim Hotel 5 Stars

### Client

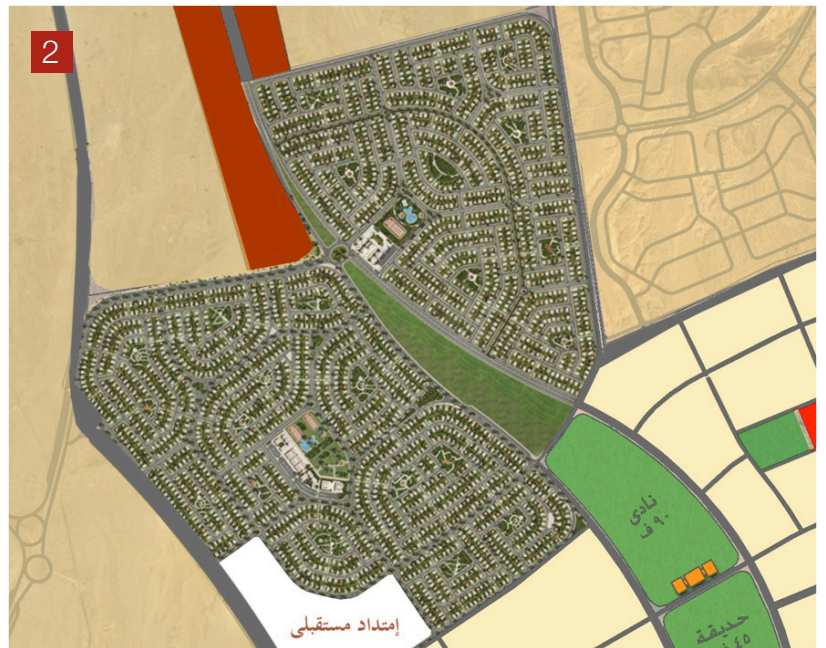
Karrar Group

### Project Location

New Cairo, Egypt

### Services

MEP



## 2 Bait EL Watan Infrastructure Networks – 420 Hectare

### Client

Ministry of Housing

### Project Location

New Cairo, Egypt

### Services

Water Supply

Sewer

Electrical

Telecommunications

Roads





# Al Amaan City Centre

Retail, Office Building,  
Hotel Apartments, and Cinema

40 Floor  
Steel Structure

## Client

Social Security Investment  
Authority (SSIA)

## Project Location

Khartoum, Sudan

## Services

Architectural  
Structural  
MEP  
Interior Design



A 40 floor Steel Structure design.

Al Amaan City Centre is a high rise building, located in the heart of Khartoum, the capital of Sudan. Has a plot area of 8,875 sq.m, and foot print of 6,175 sq.m, and built-up are of 162,470 sq.m. The mixed-use centre has spaces for retail, office building, hotel apartments, and cinema.



1



1

## EL TUR KING SALMAN UNIVERSITY - 86.1 Hectare

### Client

Engineering Authority for Armed  
Forces

### Project Location

El Tur, Egypt

### Services

Roads Network Design  
Water Supply Network  
Drainage Network  
Irrigation Network  
Fire Fighting  
Electrical Network  
Telephone & Data Networks

2

## Qasr Compression Gas Project

### Client

Khalda Petroleum Co.

### Project Location

Western Desert, Egypt

### Services

Construction Supervision  
Quality Control

2







## 1 Oriental Weavers Factories

### Client

Oriental Weavers Co.

### Project Location

10th of Ramadan City, Egypt

### Services

Master Planning  
Architectural

## 2 Diesel Tower Residential Apartments – 20 floors

### Client

Diesel Co.

### Project Location

Khartoum, Sudan

### Services

Architectural  
Structural  
MEP  
Interior Design







# Al Quds Building

5 Stars Hotel, Retail, Office Building,  
Residential Apartments

23  
Floor

**Client**  
Sidar, Co.

**Project Location**  
Alger, Algeria

**Services**  
MEP  
Interior Design



Al Kods mixed use located in Alger City. The mixed-use building has a plot area of 13,528 sq.m, and foot print of 10,860 sq.m, and built-up of 120,414 sq.m in 23 floors. The mixed-use building has spaces for retail, office building, and residential.





## 1 Maryland Park & Casino

### Client

Magic Dreams for Real Estate  
Investment Co., UAE

### Project Location

Heliopolis, Cairo, Egypt

### Services

MEP, and Infrastructure Networks

## 2 Niyala Hotel - 4 Stars - 120 Room

### Client

Ministry of Interior

### Project Location

Niyala, Sudan

### Services

Architectural, Structural  
MEP, Interior Design





3

### Study & Design of the Enhancement and Development of Al Riyadh Road – 15km

#### Client

Municipality of Qatif Governorate

#### Project Location

Al Qatif, Saudi Arabia

#### Services

Master Plan  
Roads Design  
Architectural  
Landscaping  
Infrastructure Networks

#### Analysis/ Studies

Transportation and Traffic Analysis  
Environmental Impact Assessment

4

### Wahran Complex – 24 floor

#### Client

Sidar, Co.

#### Project Location

Wahran, Algeria

#### Services

Architectural, Structural  
MEP, Interior Design

4



24  
Floor





# Nile Grand Plaza

5 Stars Hotel, Office Building, and Retail

31  
Floor

## Client

Ministry of Interior

## Project Location

Khartoum, Sudan

## Services

Architectural  
Structural  
MEP  
Interior Design



Nile Grand Plaza is a mixed-use building, located in Khartoum City. The mixed-use building has a plot area of 8,900 sq.m, and foot print of 4,585 sq.m, and built-up of 113,980 sq.m in 31 floors. The mixed-use building comprise 5-stars hotel, retail spaces, and office building, and in-river restaurant.





## 1 National Gene Bank

### Client

Agriculture Research Centre

### Project Location

Giza, Egypt

### Services

Architectural  
Interior Design  
Structural  
MEP

## 2 Medical Tower

### Client

Social Security Investment Authority  
(SSIA)

### Project Location

Khartoum, Sudan

### Services

Medical Planning  
Medical Equipment  
Architectural  
Structure  
MEP  
Interior Design







## 1 Oil Libya Office Building 9 Floors

### Client

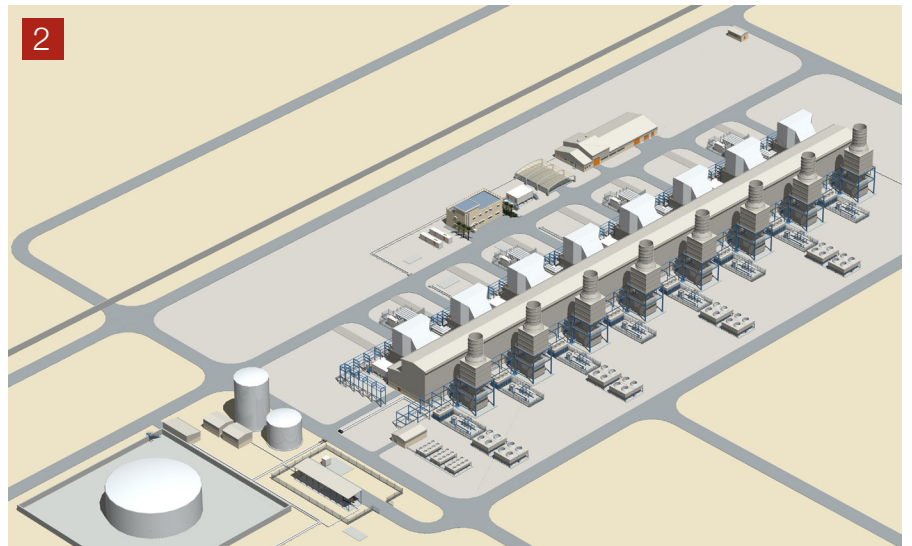
Oilibya Misr Co.

### Project Location

New Cairo, Egypt

### Services

Architectural  
Structural  
MEP  
Interior Design



## 2 Az-Zour Gaz Turbine Power Station – 1000 Mega

### Client

Kuwait Government

### Project Location

Azzour, Kuwait

### Services

Civil Works





### 3 Sudan Cotton Office Building

#### Client

Sudan Cotton Co.

#### Project Location

Khartoum, Sudan

#### Services

Architectural, Structural  
MEP, Interior Design

### 4 Um Dorman Hospital – 200 bed

#### Client

Social Security Investment Authority (SSIA)

#### Project Location

Um Dorman, Sudan

#### Services

Medical Planning  
Medical Equipment Planning









*"Is committed to the quality of every step of the way, driving innovation to achieve the timely, efficient, and cost-effective delivery of programs."*



#### CAIRO OFFICE - HEAD OFFICE

Address: 28 Abd El Azeim El Gholamy St., Nasr City, Cairo, Egypt

Tel.: (+202) 2349 6892/ 6686/ 7224

Fax: (+202) 2349 6847

Mobile: (+20) 100 0064 715

#### KHARTOUM OFFICE

Address: Nile St., Kuwaitian Tower 2, Floor 2,  
Khartoum, Sudan

Tel.: (+249) 1551 54580 - 1549 11944

Fax: (+249) 1837 93687

Mobile: (+249) 91 237 4297

#### AL KUWAIT OFFICE

Address: P.O. Box: 21501 Safat, Code No. 13067 - Kuwait

Tel.: (+965) 2262 9054

Fax: (+965) 2262 9043

Mobile: (+965) 66 666 332

#### ALGER OFFICE (SIDAR CONSULT)

Address: 142, Haï El Bina, Dely Brahim, Alger, Algeria

Tel.: (+213) (0) 2191 0191

Fax: (+213) (0) 2191 0190

#### CONTACTS

##### FOR NEW BUSINESS

Abdelaal Elhayawan

(+20) 100 777 1110

abdelaal@ihcg-corp.com

##### FOR PROJECTS

Ayman Elhayawan

(+20) 100 444 4401

ayman@ihcg-corp.com

ISO 9001:2008

ISO 14001:2004

OHSAS 18001:2007

url: [www.ihcg-corp.com](http://www.ihcg-corp.com)

email: [info@ihcg-corp.com](mailto:info@ihcg-corp.com)